

Supplement of Atmos. Chem. Phys., 21, 2363–2381, 2021
<https://doi.org/10.5194/acp-21-2363-2021-supplement>
© Author(s) 2021. This work is distributed under
the Creative Commons Attribution 4.0 License.



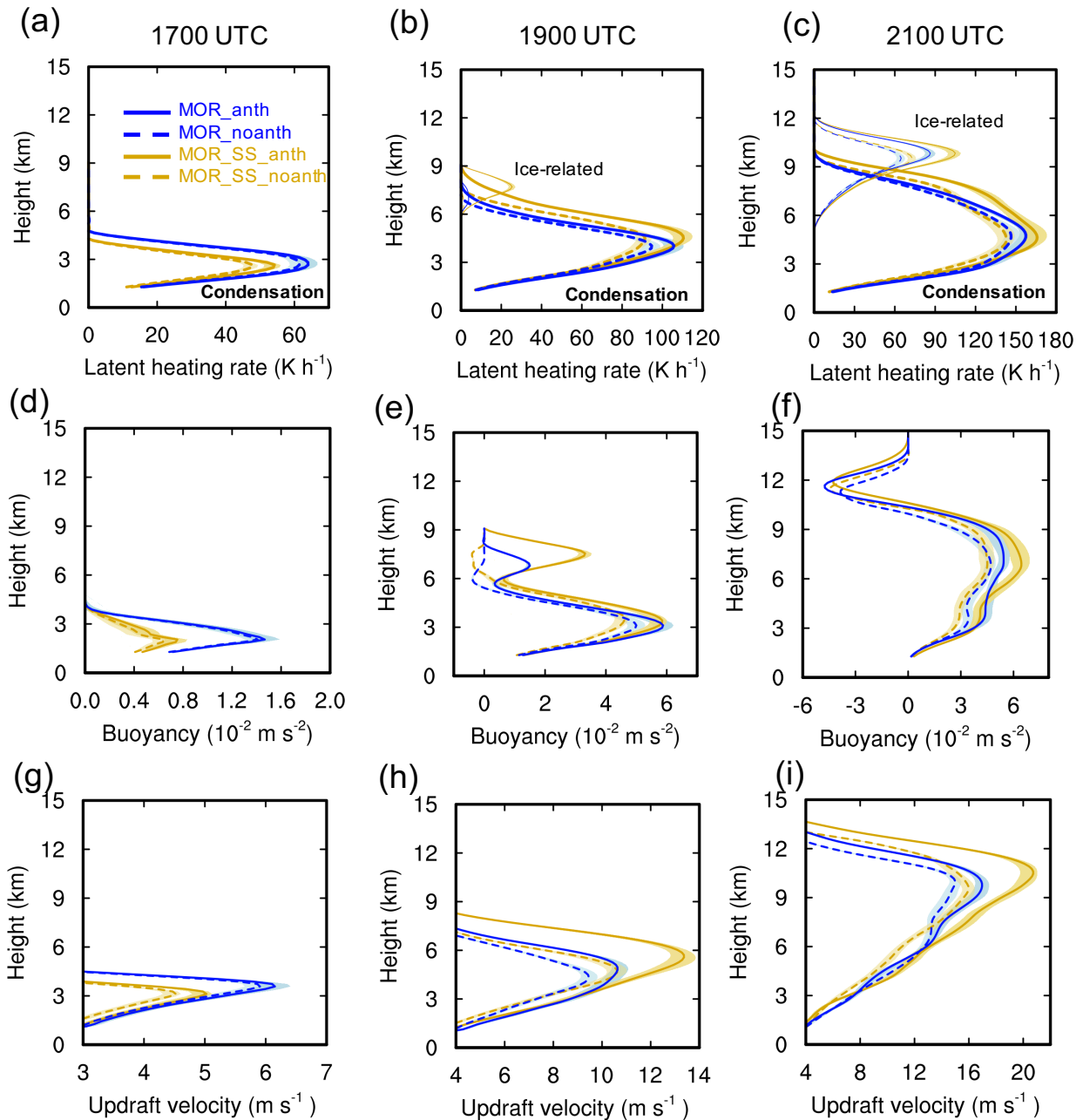
Supplement of

Impacts of cloud microphysics parameterizations on simulated aerosol–cloud interactions for deep convective clouds over Houston

Yuwei Zhang et al.

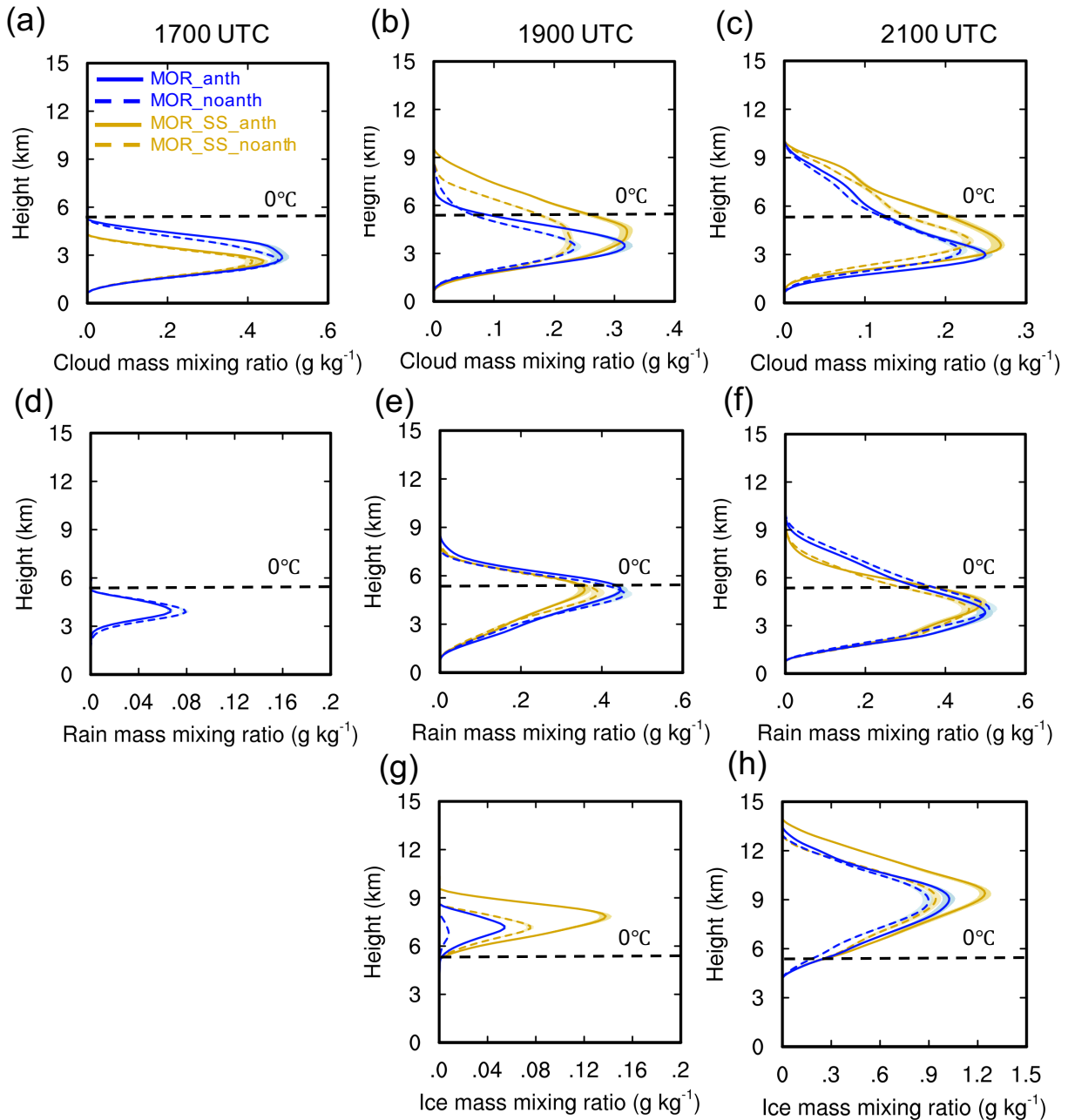
Correspondence to: Jiwen Fan (jiwen.fan@pnnl.gov)

The copyright of individual parts of the supplement might differ from the CC BY 4.0 License.



17
 18 **Figure S1** Vertical profiles of (a-c) latent heating rate from condensation (weighted lines) and ice-
 19 related processes (freezing, riming, and deposition; thin lines), (d-f) buoyancy, (g-i) updraft
 20 velocity averaged over the top 25 percentiles (i.e., 75th to 100th) of the updrafts with value greater
 21 than 2 m s^{-1} from the simulations MOR_anth, MOR_noanth, MOR_SS_anth, and
 22 MOR_SS_noanth over the analysis domain as shown in the red box in Figure 7 at 1700 UTC, 1900
 23 UTC and 2100 UTC. Data are processed in the same way as Figure 11.

24

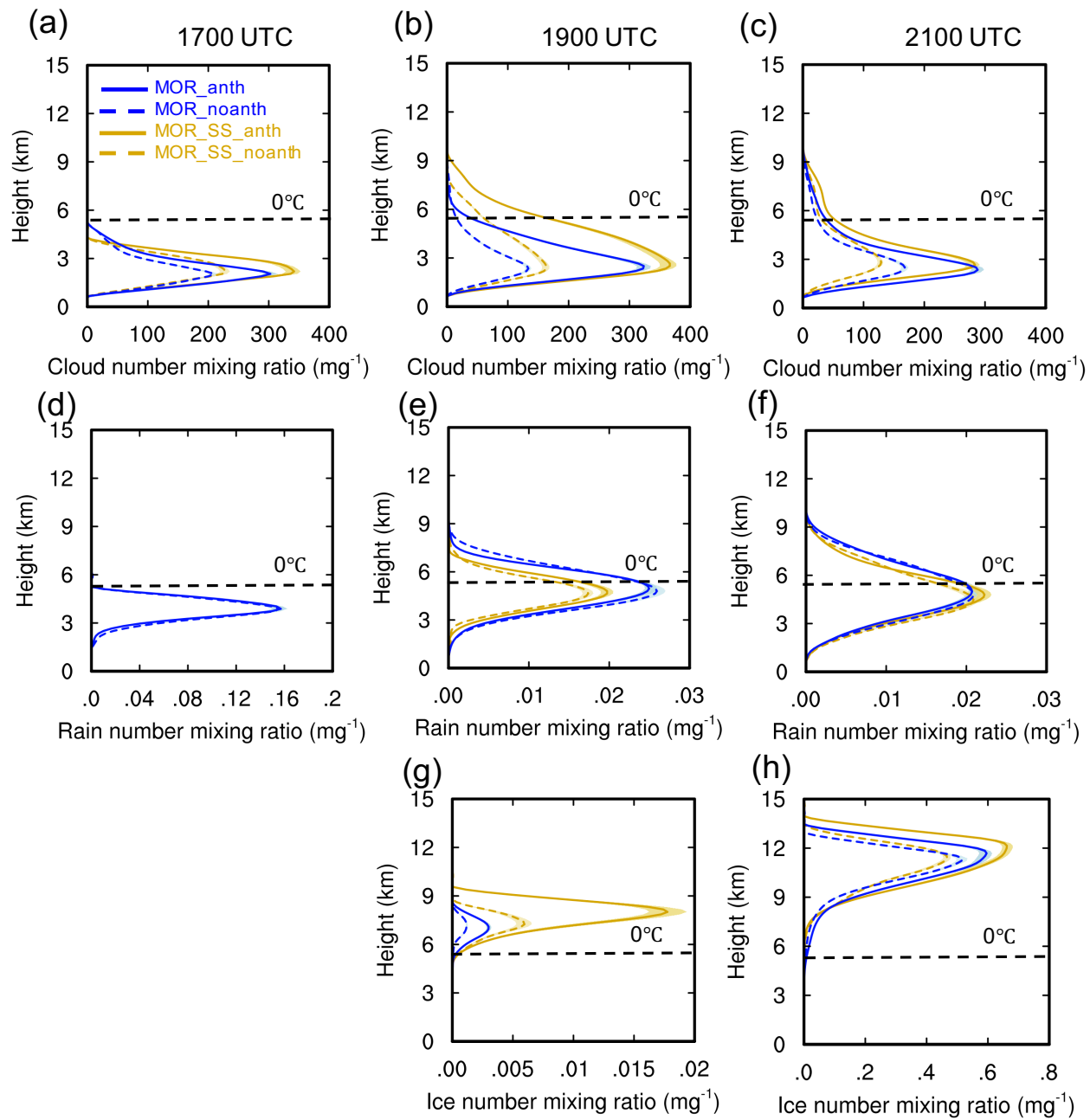


25

26 **Figure S2** Vertical profiles mass mixing ratios of (a-c) cloud droplet, (d-f) rain drop and (g-h) ice
 27 particle (including ice, snow, and graupel) averaged over cloudy points (hydrometeor mass larger
 28 than 10^{-5} kg kg^{-1}) from the simulations MOR_anth, MOR_noanth, MOR_SS_anth, and
 29 MOR_SS_noanth over the analysis domain as shown in the red box in Figure 7 at 1700 UTC, 1900
 30 UTC and 2100 UTC. Data are processed in the same way as Figure 11.

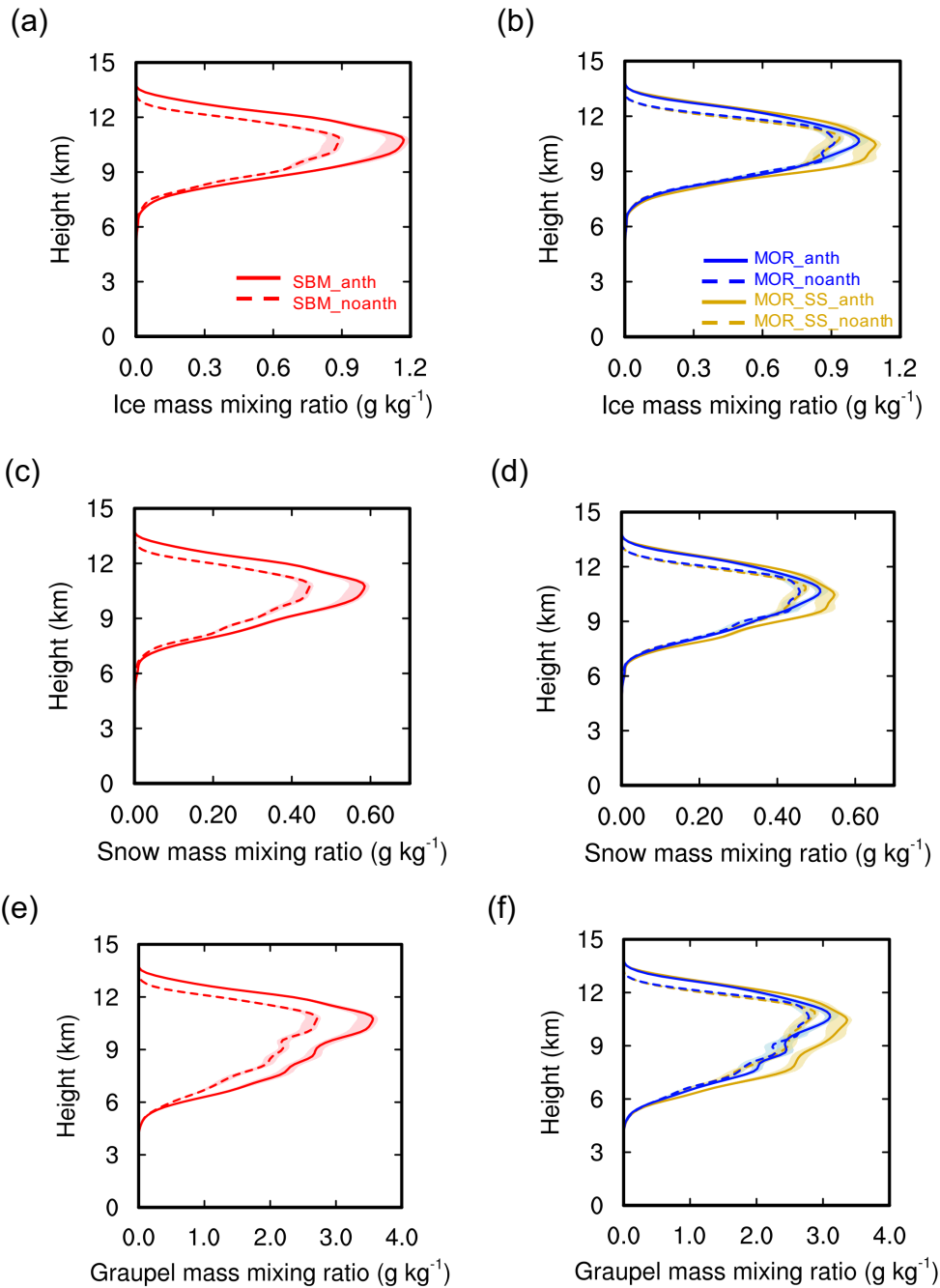
31

32



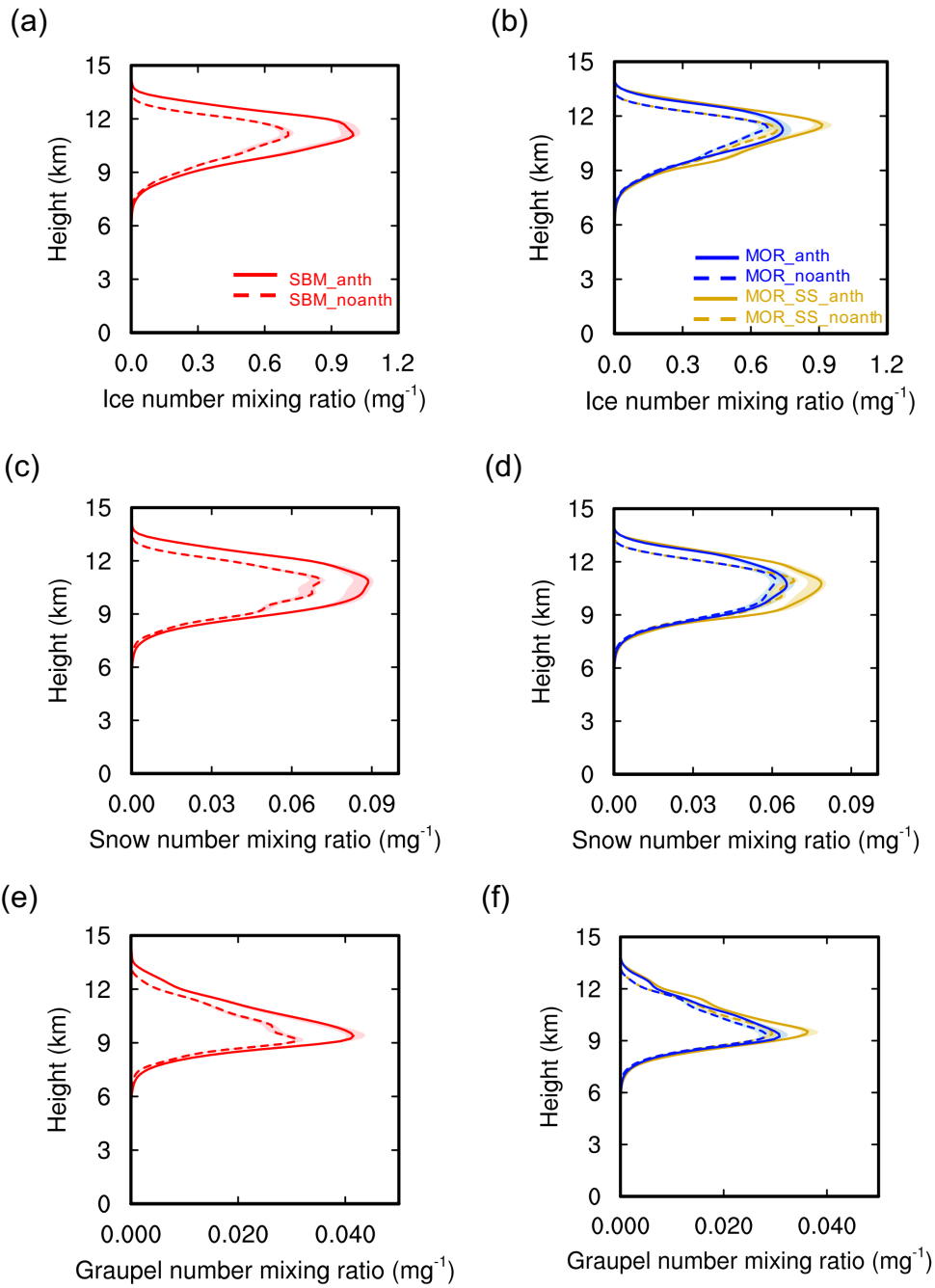
33
 34
 35
 36

Figure S3 Same as Figure S2, but for hydrometeor number mixing ratio.



37

38 **Figure S4** Vertical profiles of (a, b) ice, (c, d) snow and (e, f) graupel particle (mass mixing ratios
 39 averaged over the top 25 percentiles (i.e., 75th to 100th) of the updrafts with value greater than 2
 40 m s^{-1} from the simulations SBM_anth and SBM_noanth (red), MOR_anth and MOR_noanth
 41 (blue), and MOR_SS_anth and MOR_SS_noanth (orange) over the study area (red box in Fig. 7)
 42 during the strong convection period (2000 – 2300 UTC, 19 Jun 2013). Data are processed in the
 43 same way as Figure 11.



45

46 **Figure S5** Same as Figure S4, but for hydrometeor number mixing ratio.