



Himawari-8-derived diurnal variations in ground-level PM_{2.5} pollution across China using the fast space-time Light Gradient Boosting Machine (LightGBM)

Jing Wei^{1,2,3}, Zhanqing Li², Rachel T. Pinker², Jun Wang³, Lin Sun⁴, Wenhao Xue¹, Runze Li¹, and Maureen Cribb²

¹State Key Laboratory of Remote Sensing Science, College of Global Change and Earth System Science, Beijing Normal University, Beijing, China

²Earth System Science Interdisciplinary Center, Department of Atmospheric and Oceanic Science, University of Maryland, College Park, MD, USA

³Department of Chemical and Biochemical Engineering, Iowa Technology Institute, Center for Global and Regional Environmental Research, The University of Iowa, Iowa City, IA, USA

⁴College of Geodesy and Geomatics, Shandong University of Science and Technology, Qingdao, China

Correspondence: Jing Wei (weijing_rs@163.com) and Zhanqing Li (zhanqing@umd.edu)

Received: 16 December 2020 – Discussion started: 6 January 2021

Revised: 28 March 2021 – Accepted: 18 April 2021 – Published: 25 May 2021

Abstract. Fine particulate matter with a diameter of less than 2.5 μm (PM_{2.5}) has been used as an important atmospheric environmental parameter mainly because of its impact on human health. PM_{2.5} is affected by both natural and anthropogenic factors that usually have strong diurnal variations. Such information helps toward understanding the causes of air pollution, as well as our adaptation to it. Most existing PM_{2.5} products have been derived from polar-orbiting satellites. This study exploits the use of the next-generation geostationary meteorological satellite Himawari-8/AHI (Advanced Himawari Imager) to document the diurnal variation in PM_{2.5}. Given the huge volume of satellite data, based on the idea of gradient boosting, a highly efficient tree-based Light Gradient Boosting Machine (LightGBM) method by involving the spatiotemporal characteristics of air pollution, namely the space-time LightGBM (STLG) model, is developed. An hourly PM_{2.5} dataset for China (i.e., ChinaHighPM_{2.5}) at a 5 km spatial resolution is derived based on Himawari-8/AHI aerosol products with additional environmental variables. Hourly PM_{2.5} estimates (number of data samples = 1 415 188) are well correlated with ground measurements in China (cross-validation coefficient of determination, $\text{CV-}R^2 = 0.85$), with a root-mean-square error (RMSE) and mean absolute error (MAE) of 13.62 and 8.49 $\mu\text{g m}^{-3}$, respectively. Our model captures

well the PM_{2.5} diurnal variations showing that pollution increases gradually in the morning, reaching a peak at about 10:00 LT (GMT+8), then decreases steadily until sunset. The proposed approach outperforms most traditional statistical regression and tree-based machine-learning models with a much lower computational burden in terms of speed and memory, making it most suitable for routine pollution monitoring.

1 Introduction

China has faced severe environmental problems during the last 2 decades, especially air pollution (An et al., 2019; Chan and Yao, 2008; Z. Li et al., 2017; Q. Zhang et al., 2019; Wei et al., 2021a). The sources of air pollution are numerous, coming from both natural changes (e.g., forest fires, biomass burning) and human activities (e.g., industrial production, transportation) (Huang et al., 2014; Sun et al., 2004; Wei et al., 2019a, b, 2021b). Particulate matter with a diameter of less than 2.5 μm (PM_{2.5}) has a greater impact on the atmospheric environment and climate change than other air pollutants (e.g., PM₁₀, nitrogen dioxide, NO₂, and sulfur dioxide, SO₂) (Jacob and Winner, 2009; Z. Li et al., 2017, 2019; Ramanathan and Feng, 2009). Moreover, they can

cause great harm to human health due to their smaller particle size (Delfino et al., 2005; Kampa and Castanas, 2008; Kim et al., 2015; Lelieveld et al., 2015). China has established and operates multiple ground-based observation networks to monitor air pollution in real time across mainland China, including information about PM_{2.5} pollution.

For near-surface concentrations, the networks provide high-quality PM_{2.5} measurements every hour (even every few minutes) but with non-uniform coverage. In recent years, an increased effort has been made in estimating PM_{2.5} with products generated from multiple instruments on sun-synchronous satellites, e.g., the Multi-angle Imaging SpectroRadiometer (MISR) (Liu et al., 2005; van Donkelaar et al., 2006), the Moderate Resolution Imaging Spectroradiometer (MODIS) (Liu et al., 2007; Ma et al., 2014; Wei et al., 2019a, 2020, 2021a), and the Visible Infrared Imaging Radiometer Suite (VIIRS) (Wei et al., 2021c; Wu et al., 2016; Yao et al., 2019). However, due to their low revisit cycles (one or two overpasses per day), they are unable to monitor the diurnal variation in pollution. Currently, most available PM_{2.5} datasets are at low temporal resolutions that cannot meet the requirements of air pollution real-time monitoring (Lennartson et al., 2018). For example, knowing when heavy pollution might occur during the day, people may adjust their time outdoors doing activities accordingly. Following the launch of the Himawari-8 Advanced Himawari Imager (Himawari-8/AHI) on 7 October 2014 (Bessho et al., 2016; Letu et al., 2020), near-surface PM_{2.5} concentrations in the Eastern Hemisphere can now be estimated and used to examine their diurnal cycle.

Wang et al. (2017) used the linear mixed-effect (LME) model, and Sun et al. (2019) applied the geographically weighted regression (GWR) and support vector regression (SVR) models to estimate hourly PM_{2.5} concentrations in the Beijing–Tianjin–Hebei (BTH) region from the Himawari-8 aerosol optical depth (AOD) product. T. Zhang et al. (2019) developed an improved LME model, and Xue et al. (2020) proposed an improved geographically and temporally weighted regression (IGTWR) model to derive hourly PM_{2.5} maps based on the Himawari-8 AOD product over central and eastern China. In addition to traditional statistical regression models, several artificial intelligence models, including the random forest (RF), the gradient boosting decision tree (GBDT), the eXtreme Gradient Boosting (XGBoost), and the deep neural network (DNN), have been recently successfully adopted to obtain ground-level PM_{2.5} concentrations in local regions and in the whole of China (Chen et al., 2019; Gui et al., 2020; Liu et al., 2019; Sun et al., 2019; Zhang et al., 2020). Nevertheless, due to their poor data-mining ability, traditional statistical regression methods usually suffer from large uncertainties. While artificial intelligence methods can achieve high accuracies, they are often highly demanding on computational power and are thus often slow. Therefore, spatiotemporal variations in PM_{2.5} have often been neglected in the models developed in previous stud-

ies (Chen et al., 2019; Liu et al., 2019; Sun et al., 2019; Wang et al., 2017; T. Zhang et al., 2019), resulting in relatively low accuracies.

Focusing on the above issues, we have developed a new, highly efficient, and precise method for improving ground-level PM_{2.5} estimates by incorporating spatial and temporal information into the tree-based Light Gradient Boosting Machine (LightGBM) model. This new model is called the space-time LightGBM (STLG) model, and it has been used to generate a high-quality, high-temporal-resolution (hourly) PM_{2.5} dataset over eastern China (at a spatial resolution of 5 km) from the Himawari-8/AHI hourly AOD product. Section 2 provides details about the data used and introduces the development of the STLG model. Section 3 validates the hourly PM_{2.5} estimates and shows the diurnal PM_{2.5} variations across China. Comparisons with results from traditional models and from previous studies are also presented. Section 4 summarizes the study.

2 Materials and methods

2.1 Data sources

2.1.1 PM_{2.5} and AOD data

PM_{2.5} hourly measurements from 1583 monitoring stations across China for the year 2018 were collected (Fig. 1 in Wei et al., 2020). The latest Himawari-8 version 2 hourly 5 km AODs at 500 nm across mainland China for that year were also collected. This AOD product is synthesized from level 2 10 min AODs generated by a newly developed Lambertian-surface-assumed aerosol retrieval algorithm (Letu et al., 2020; Yoshida et al., 2018). Himawari-8 AOD retrievals have been preliminarily evaluated against in situ AOD retrievals provided by the Aerosol Robotic Network (Giles et al., 2019) and the Sun–Sky Radiometer Observation Network (Li et al., 2018), showing that they are consistent ($R = 0.75$), with a root-mean-square error (RMSE) and mean absolute error (MAE) of 0.39 and 0.21, respectively (Wei et al., 2019c). Here, only low-uncertainty AOD retrievals (500 nm) were selected for estimating PM_{2.5} concentrations.

2.1.2 Meteorological conditions

PM_{2.5} can be significantly affected by meteorological conditions (Su et al., 2018). However, most currently available reanalysis meteorological products have low temporal resolutions (~ 3 – 6 h). Recently (14 June 2018), the fifth-generation European Centre for Medium-range Weather Forecasts (ECMWF) global atmospheric reanalysis (ERA5) at a horizontal resolution of $0.25^\circ \times 0.25^\circ$ has been released, as well as the land version (12 July 2019) at a horizontal resolution of $0.1^\circ \times 0.1^\circ$, both at an hourly timescale (1979 to the present). Here, we use seven ERA5 hourly meteorological parameters, i.e., the 2 m temperature (TEM), total evapora-

tion (ET), relative humidity (RH), 10 m u- and v-components of wind, surface pressure (SP), and boundary-layer height (BLH).

2.1.3 Human influences

Human activity is a key factor affecting PM_{2.5} pollution. The global annual LandScan™ product at a 1 km spatial resolution for the year 2018 was selected to obtain the population distribution (POP) (Dobson et al., 2000). Monthly anthropogenic source emission data from the Multi-resolution Emission Inventory for China (MEIC) (M. Li et al., 2017; Zheng et al., 2018) were also employed. This dataset is generated from agricultural, industrial, power, residential, and transportation information obtained at more than 700 anthropogenic sources, including a total of 10 atmospheric pollutants and greenhouse gases. Here, four main precursors were selected, i.e., ammonia (NH₃), nitrogen oxides (NO_x), SO₂, and volatile organic compounds (VOCs), and direct emissions to PM.

2.1.4 Ancillary data

Two additional ancillary datasets, namely, the MODIS monthly normalized difference vegetation index (NDVI) at a horizontal resolution of 0.05° × 0.05° and the Shuttle Radar Topography Mission (SRTM) 90 m digital elevation model (DEM) products, were selected to characterize land cover, its change, and topographical conditions in China. All selected variables (Table 1) with potential impacts on PM_{2.5} concentrations were resampled to the same spatial resolution as the Himawari-8 aerosol product, namely, 0.05° × 0.05°.

2.2 Space-time LightGBM model

2.2.1 LightGBM model

The LightGBM model, a newly developed tree-based machine-learning approach, was introduced in 2017 (Ke et al., 2017). Using the gradient boosting framework to construct the decision tree, this approach can tackle both regression and classification tasks and as such can be expanded for PM applications. It can also tackle the main challenge faced in traditional machine-learning approaches, namely, computational complexities, which are very time-consuming. LightGBM is a fast, distributed, and highly efficient method that reduces the number of data samples (M) and features (N). The LightGBM model includes three main steps when constructing the decision tree.

1. *Histogram-based algorithm.* Continuous features are first converted to different bins which are used to construct feature index histograms without the need to sort during training. It goes through all the data bins to find the best split point from the feature histograms, which can significantly reduce the computation cost of the split gain. The overall complexity is $O(M \times N)$.

2. *Gradient-based one-side sampling.* Data samples are first sorted in descending order according to their absolute gradients, and the top a % of them are selected as a subset sample with large gradients. The b % samples are then randomly chosen from the remaining data as a subset sample with small gradients. The sampled data with small gradients are multiplied by a weight coefficient $\left(\frac{1-a}{b}\right)$. Consequently, a new classifier is learned and established using the above-sampled data until convergence.
3. *Exclusive feature bundling.* A graph with weighted edges is first constructed, and each weight corresponds to the total number of conflicts between two features. The features are then sorted in descending order according to the degree of each feature (the greater the degree, the greater the conflict with other points). Last, each feature is checked in the sorted sequence, and it is assigned to a combination with small conflicts or a new combination is created.

In addition to the main technologies mentioned above, there are other features of the optimization, such as the leaf-wise tree growth strategy with depth restriction (Shi, 2007), histogram difference acceleration, sequential access gradient, and the support of category feature and parallel learning. These advanced methodologies make it possible to reach a high accuracy and efficiency (Ke et al., 2017).

2.2.2 Model development

It is well known that air pollution has spatiotemporal heterogeneity leading to large differences in PM_{2.5} concentrations in both time and space. Such characteristics have always been ignored in most traditional statistical regression and artificial intelligence methods. Studies have shown that including spatiotemporal information has led to improved PM_{2.5} estimates using remote sensing techniques (Z. Li et al., 2017; Wei et al., 2019a, 2020). Therefore, we have introduced a new approach to integrating spatiotemporal information into the LightGBM model. The new model developed here is called the STLGM model. The spatial feature is represented by the geographical distances of one pixel to other points in the circumscribed rectangle of the study region (Baez-Villanueva et al., 2020; Behrens et al., 2018). The distance is calculated using the haversine method (Eq. 1) to reflect the spherical distance between two points in the sphere space (Wei et al., 2021a). The temporal feature is represented by the day of the year (DOY), which is used to distinguish each data record on different days of the year during the model training.

$$\text{DIS} = 2 \cdot r \cdot \arcsin \left(\sqrt{\sin^2 \left(\frac{\varphi_2 - \varphi_1}{2} \right) + \cos(\varphi_1) \cos(\varphi_2) \sin^2 \left(\frac{\gamma_2 - \gamma_1}{2} \right)} \right), \quad (1)$$

Table 1. Summary of datasets and sources used in this study. CNEMC is the China National Environmental Monitoring Center.

Dataset	Variable	Content	Unit	Spatial resolution	Temporal resolution	Data source
PM _{2.5}	PM _{2.5}	PM _{2.5}	µg m ⁻³	In situ	Hourly	CNEMC
AOD	AOD	Himawari-8 AOD	–	5 km × 5 km	Hourly	Himawari-8
Meteorology	ET	Total evaporation	mm	0.1° × 0.1°	Hourly	ERA5
	SP	Surface pressure	hPa	0.1° × 0.1°		
	TEM	2 m temperature	K	0.1° × 0.1°		
	WU	10 m u-component of wind	m s ⁻¹	0.1° × 0.1°		
	WV	10 m v-component of wind	m s ⁻¹	0.1° × 0.1°		
	BLH	Boundary-layer height	m	0.25° × 0.25°		
	RH	Relative humidity	%	0.25° × 0.25°		
Emissions	NH ₃	Ammonia	Mg grid ⁻¹	0.25° × 0.25°	Monthly	MEIC
	NO _x	Nitrogen oxides	Mg grid ⁻¹			
	SO ₂	Sulfur dioxide	Mg grid ⁻¹			
	VOC	Volatile organic compounds	Mg grid ⁻¹			
	PM	PM, coarse	Mg grid ⁻¹			
Land cover	NDVI	NDVI	–	0.05° × 0.05°	Monthly	MOD13C2
Topography	DEM	Surface elevation	m	90 m × 90 m	–	SRTM
Population	POP	Ambient population	–	1 km × 1 km	Yearly	LandScan™

where φ and γ represent the latitude and longitude of a point on the sphere, respectively, and r denotes Earth's mean radius (≈ 6371 km). Figure 1 illustrates the flowchart of the new STLGM model.

In addition to Himawari-8 AODs, other auxiliary variables were considered and employed to improve PM_{2.5}–AOD relationships. However, to avoid redundant information, we first calculated the normalized importance (%) of each feature to the PM_{2.5} estimation during the model training (Fig. 2). It represents the total gains of splits that use the feature during the decision-tree construction but not the physical contribution. AOD is found to be the most important feature, accounting for about 17%. All meteorological factors have an important impact on the PM_{2.5} estimation, especially BLH, RH, and TEM (importance > 8%), followed by two surface-related variables (i.e., NDVI and DEM) and POP. The influence of aerosol precursors and emissions (i.e., NH₃, NO_x, SO₂, PM, and VOC) on the PM_{2.5} estimation cannot be ignored (importance > 2%). Therefore, all 16 selected variables are included to establish the final model in this study.

Here, two independent 10-fold cross-validation methods (10-CV) (Rodríguez et al., 2010) based on all the data samples (i.e., out-of-sample) and PM_{2.5} monitoring stations (i.e., out-of-station) were selected to validate the model performance and the spatial prediction ability, respectively.

3 Results and discussion

3.1 Model fitting and validation

3.1.1 Spatial-scale performance

The STLGM model can largely minimize overfitting, showing a strong data-mining ability (Fig. 3) which can more accurately establish the relationships between hourly PM_{2.5} observations and influential variables (i.e., coefficient of determination, $R^2 = 0.97$ – 0.98 , RMSE = 4.18 – 7.31 µg m⁻³). Figure 4 illustrates the out-of-sample evaluation results of estimated hourly PM_{2.5} values over China from 08:00 to 17:00 LT in 2018. The STLGM model is highly accurate in estimating hourly PM_{2.5} concentrations, with high sample-based CV- R^2 values ranging from 0.81 to 0.85, strong slopes of ~ 0.81 – 0.84 , and small y-intercepts of ~ 5.52 – 7.84 µg m⁻³. The uncertainties are overall small, with RMSEs (MAEs) ranging from 11.24 (6.82) µg m⁻³ to 15.56 (9.79) µg m⁻³. However, the STLGM performs slightly differently with small differences in main evaluation indicators throughout the day. The main reason being that the number of training samples is reduced during sunrise (Fig. 4a and b) and sunset (Fig. 4i and j) in optical remote sensing, affecting the model training. Air pollution also has clear diurnal variations at different PM_{2.5} pollution levels due to the different intensities of human activities and natural conditions. In general, our model is stable and robust, with an equal out-of-sample CV- R^2 of 0.85 and an equal regression slope of 0.81 at most hours during the day in China (Fig. 4c–h).

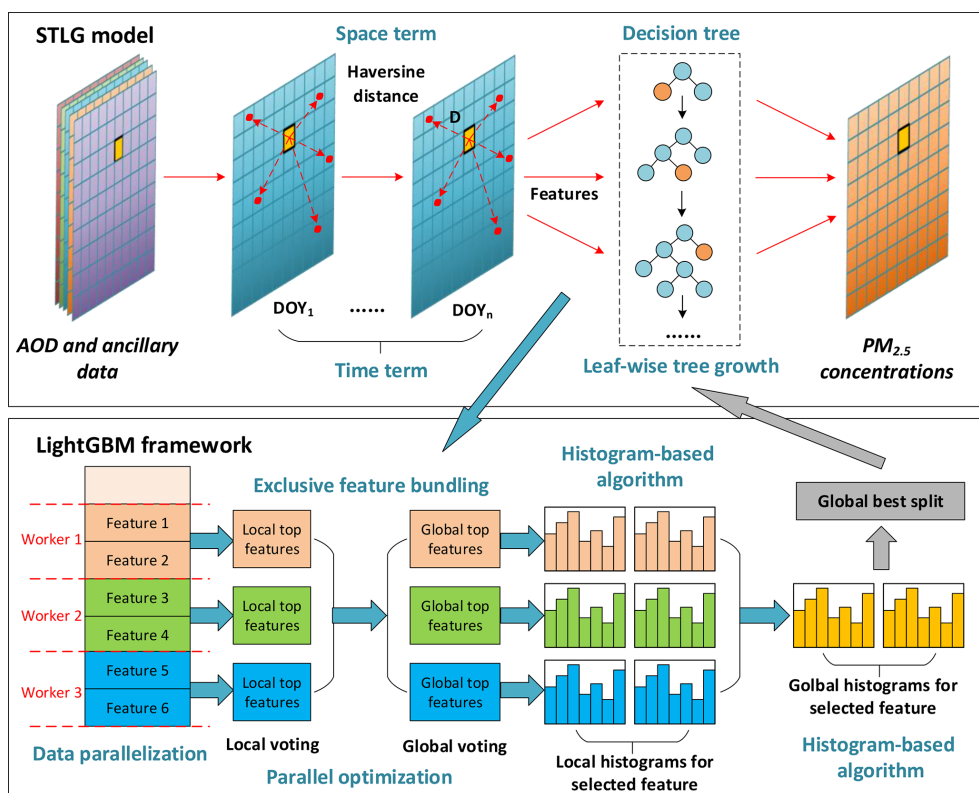


Figure 1. Schematics of the space-time LightGBM (STLG) model developed in this study (upper panel) and the framework of the original LightGBM model (bottom panel).

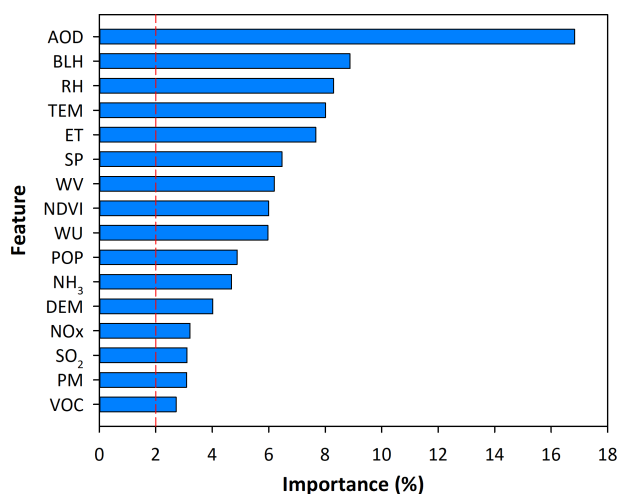


Figure 2. Sorted normalized importance (%) of each feature in the PM_{2.5} estimation during the model construction.

Furthermore, out-of-station $CV-R^2$ values range from 0.76 to 0.81, and RMSE (MAE) values range from 12.49 (7.85) $\mu\text{g m}^{-3}$ to 17.61 (11.33) $\mu\text{g m}^{-3}$ (Fig. 5), indicating that our model has a strong spatial prediction ability and can predict PM_{2.5} values well in those areas without surface ob-

servations. The station-based accuracy is also slightly decreased with reference to the sample-based accuracy, further illustrating the robustness of our model. However, two cross-validation results (e.g., slopes = 0.78–0.84) indicate that hourly PM_{2.5} concentrations are overall underestimated (Figs. 4–5), a common issue in fine-particle remote sensing (Wei et al., 2020). This can be explained by the large aerosol retrieval uncertainty, as well as the small number of data samples under highly polluted conditions (Wei et al., 2019c, d).

The regional performance of the STLG model for hourly PM_{2.5} estimates (Fig. 6) was also evaluated. Hourly PM_{2.5} estimates (number of data samples, $N = 1\,151\,595$) are highly consistent with ground measurements, with a high sample-based $CV-R^2$ of 0.87 and a strong regression slope of 0.86, showing small estimation uncertainties (i.e., RMSE = 12.77 $\mu\text{g m}^{-3}$, MAE = 8.12 $\mu\text{g m}^{-3}$) over eastern China. The STLG model performs well (e.g., $CV-R^2 = 0.88$, slope = 0.87) in two typical urban agglomerations of public concern in China, i.e., the Beijing–Tianjin–Hebei (BTH) (Fig. 6b) and Yangtze River Delta (YRD) (Fig. 6c) regions. By contrast, our model performs relatively poorly in the Pearl River Delta (PRD) region (Fig. 6d) possibly due to the significant reduction in the number of data samples caused by frequent, long-term cloud cover in southern China. Note that there are some differences in the uncertainty of hourly PM_{2.5}

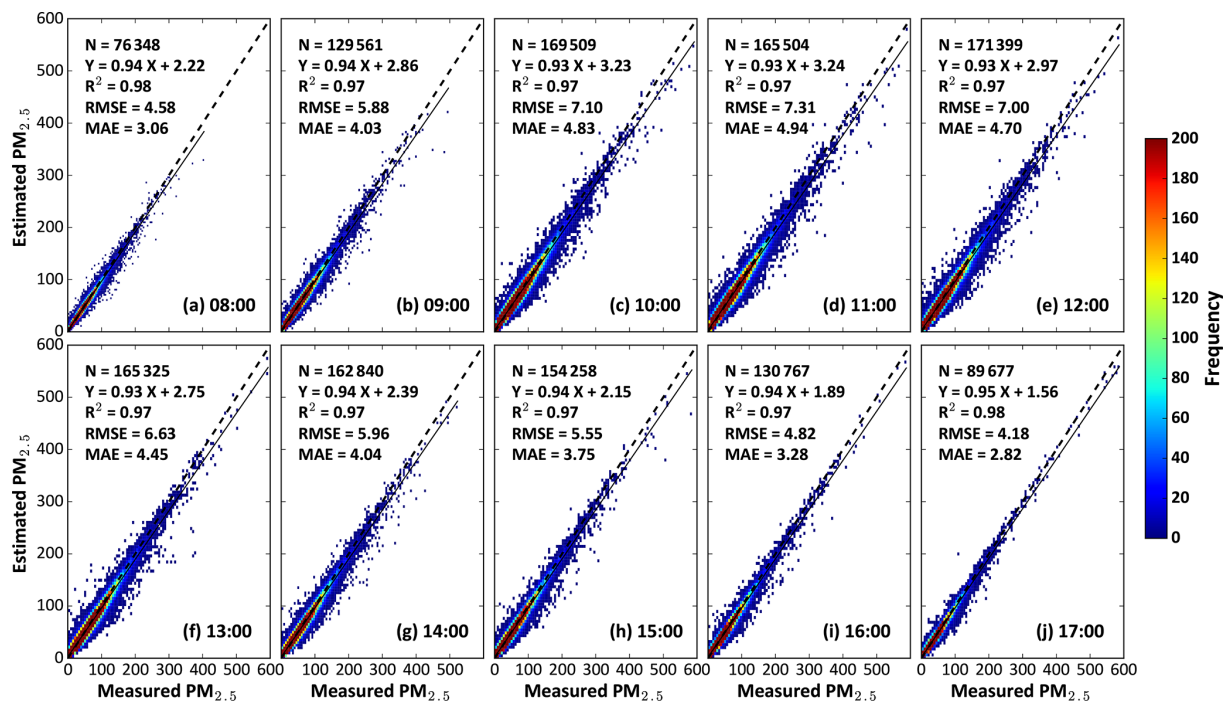


Figure 3. Density scatterplots of model-fitted PM_{2.5} estimates ($\mu\text{g m}^{-3}$) at (a) 08:00 LT, (b) 09:00 LT, (c) 10:00 LT, (d) 11:00 LT, (e) 12:00 LT, (f) 13:00 LT, (g) 14:00 LT, (h) 15:00 LT, (i) 16:00 LT, and (j) 17:00 LT in 2018 in China. Dashed lines denote 1 : 1 lines, and solid lines denote best-fit lines from linear regression.

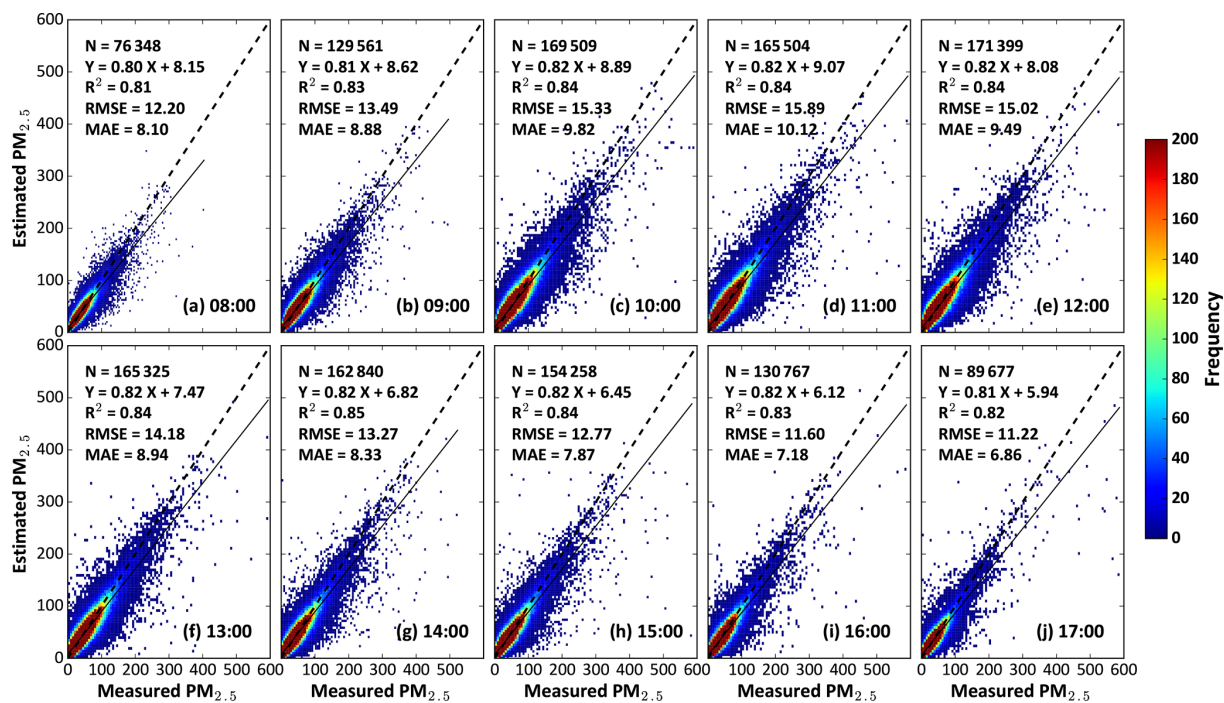


Figure 4. Density scatterplots of out-of-sample cross-validation results of PM_{2.5} estimates ($\mu\text{g m}^{-3}$) at (a) 08:00 LT, (b) 09:00 LT, (c) 10:00 LT, (d) 11:00 LT, (e) 12:00 LT, (f) 13:00 LT, (g) 14:00 LT, (h) 15:00 LT, (i) 16:00 LT, and (j) 17:00 LT in 2018 in China. Dashed lines denote 1 : 1 lines, and solid lines denote best-fit lines from linear regression.

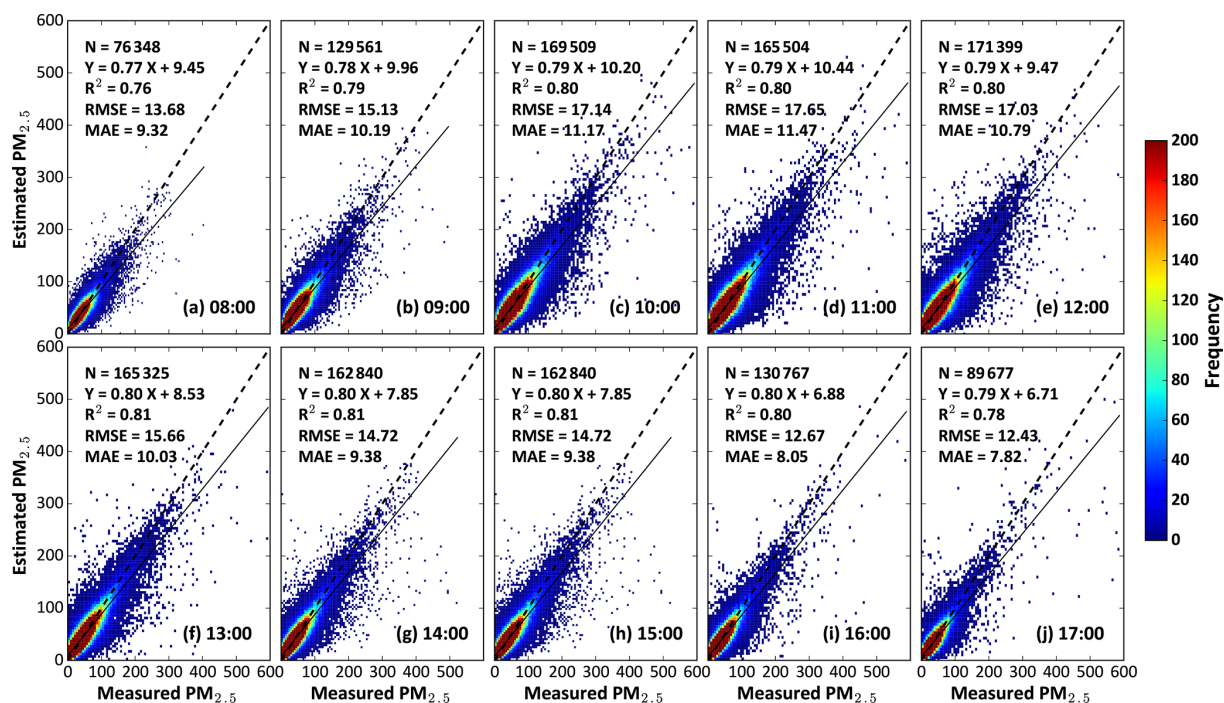


Figure 5. Density scatterplots of out-of-station cross-validation results of PM_{2.5} estimates ($\mu\text{g m}^{-3}$) at (a) 08:00 LT, (b) 09:00 LT, (c) 10:00 LT, (d) 11:00 LT, (e) 12:00 LT, (f) 13:00 LT, (g) 14:00 LT, (h) 15:00 LT, (i) 16:00 LT, and (j) 17:00 LT in 2018 in China. Dashed and solid lines denote 1 : 1 and best-fit lines from linear regression, respectively.

estimates mainly because of varying levels of air pollution. The pollution level in the BTH region is about 3 times higher than that in the PRD region.

Figure 7 shows the accuracy of the STLGM model at each monitoring station across China. At the individual site scale, the number of data samples gradually decreases from northern China to southern China mainly due to increasing cloud contamination with a site average of 997 data samples in China. Except for several scattered monitoring stations in western China, the STLGM model has a high performance and adaptability and can estimate well hourly PM_{2.5} concentrations at most monitoring stations (e.g., average $\text{CV-R}^2 = 0.78$, $\text{RMSE} = 12.21 \mu\text{g m}^{-3}$, and $\text{MAE} = 8.17 \mu\text{g m}^{-3}$). In general, approximately 76 %, 79 %, and 82 % of monitoring stations show high accuracy, with out-of-sample CV-R^2 values > 0.7 , RMSE values $< 15 \mu\text{g m}^{-3}$, and MAE values $< 10 \mu\text{g m}^{-3}$ in hourly PM_{2.5} estimates, especially for those located in central and northern China.

3.1.2 Temporal-scale performance

We first quantified the time series of the bias in hourly PM_{2.5} estimates during the day in China (Fig. 8). There is a slight temporal dependence in that the PM_{2.5} bias increases gradually with increasing standard deviation, reaching a maximum around 11:00 LT and subsequently decreasing. This seems to be closely related to the diurnal variation in PM_{2.5} concen-

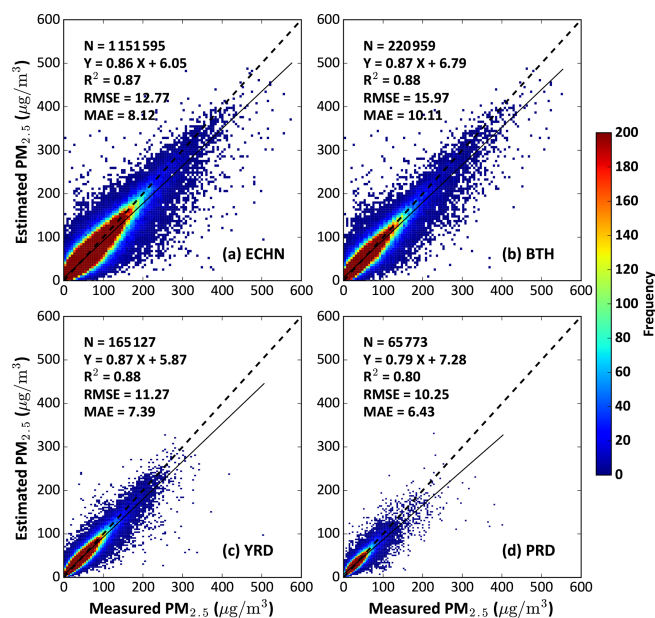


Figure 6. Density scatterplots of out-of-sample cross-validation results of hourly PM_{2.5} estimates ($\mu\text{g m}^{-3}$) in 2018 for (a) eastern China, (b) the Beijing–Tianjin–Hebei (BTH) region, (c) the Yangtze River Delta (YRD), and (d) the Pearl River Delta (PRD) in China.

trations. The PM_{2.5} estimates are less affected by the time-dependent bias in the Himawari-8 AOD product (Wei et al.,

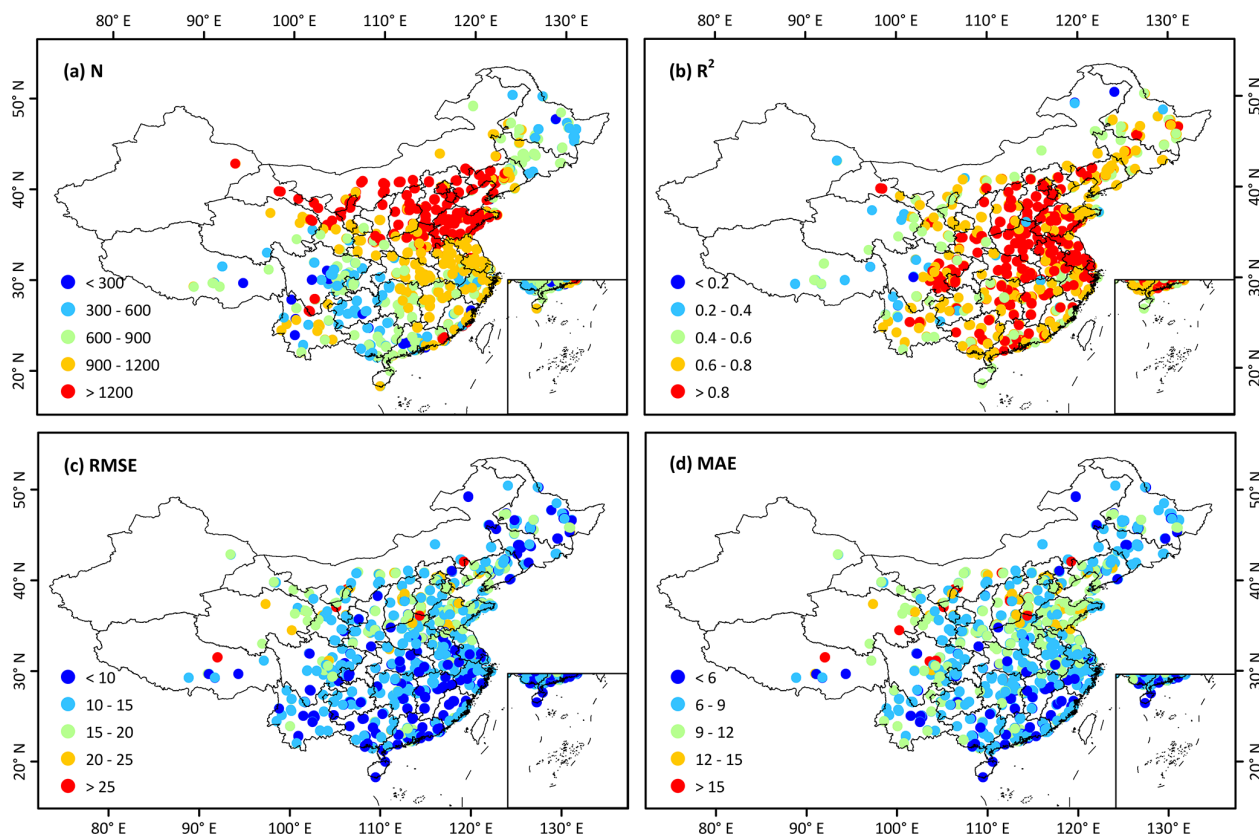


Figure 7. Individual-site-scale validation of hourly PM_{2.5} estimates ($\mu\text{g m}^{-3}$) in 2018 in China in terms of (a) the sample size (N), (b) CV- R^2 , (c) RMSE, and (d) MAE.

2019c) because machine learning is not sensitive to the systematic bias of aerosol retrievals (Wei et al., 2021c). Nevertheless, our model is generally robust and can accurately estimate PM_{2.5} concentrations with small mean (median) biases of 0.05–0.08 (0.63–0.99) $\mu\text{g m}^{-3}$ during different hours throughout the day.

We also compared Himawari-8-derived and ground-based PM_{2.5} diurnal variations from all available monitoring stations in China and three typical urban clusters (Fig. 9). Hourly PM_{2.5} concentrations observed by satellite are highly consistent with ground-based measurements, with a small difference within ± 0.10 , 0.11, 0.13, and 0.11 $\mu\text{g m}^{-3}$ in China and in each region. Moreover, the same diurnal variations in PM_{2.5} pollution are seen during the day; i.e., they reach their maximum values at 10:00 or 11:00 LT and are lower at sunrise and sunset. These results illustrate that the diurnal PM_{2.5} variations derived from Himawari-8 are reasonable compared to ground-based measurements.

We investigated the time series of the daily performance of the STLGM model in estimating hourly PM_{2.5} concentrations in China. The number of data samples varies on a daily basis, with an average of 3975 d^{-1} and with more than 83 % of all days having more than 2000 (Fig. 10). The large gap in the number of data samples is mainly caused

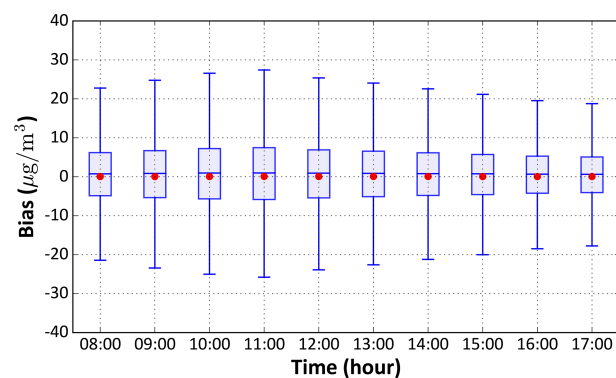


Figure 8. Boxplots of the temporal dependence of the bias in hourly PM_{2.5} estimates ($\mu\text{g m}^{-3}$) in 2018 in China. In each box, the red dot represents the mean bias, and the middle, lower, and upper horizontal blue lines represent the median bias, 25th percentile, and 75th percentile, respectively.

by different degrees of cloud contamination in the satellite aerosol products for different days. The STLGM model captures well the hourly PM_{2.5} values on most days, with an average out-of-sample R^2 of 0.73 and average RMSE and MAE values of 13.06 and 8.53 $\mu\text{g m}^{-3}$, respectively. In gen-

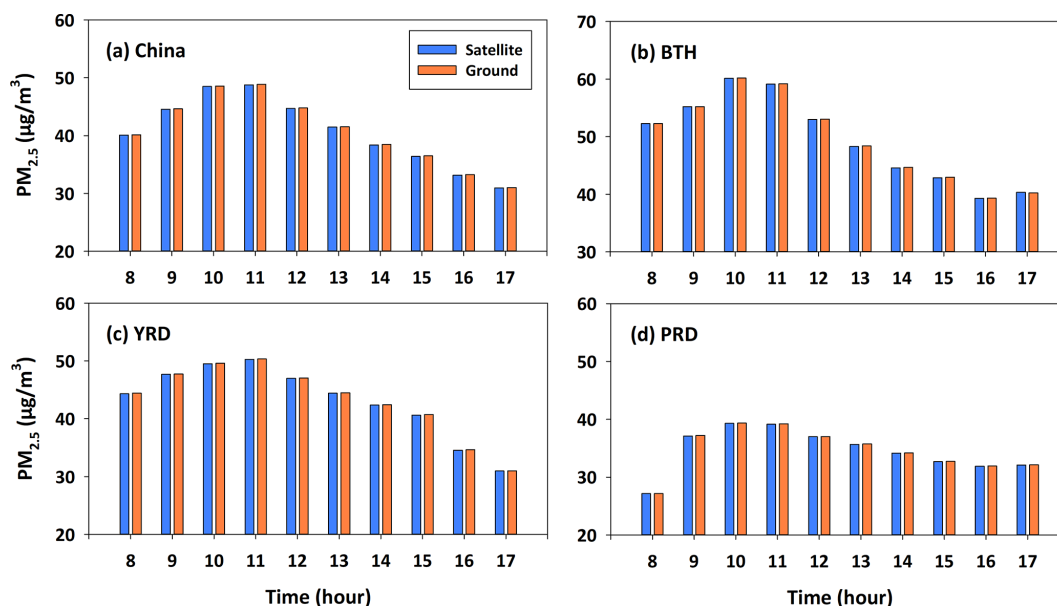


Figure 9. Time series of Himawari-8-derived (blue bars) and ground-based (orange bars) PM_{2.5} diurnal variations ($\mu\text{g m}^{-3}$) in (a) China, (b) the Beijing–Tianjin–Hebei (BTH) region, (c) the Yangtze River Delta (YRD), and (d) the Pearl River Delta (PRD).

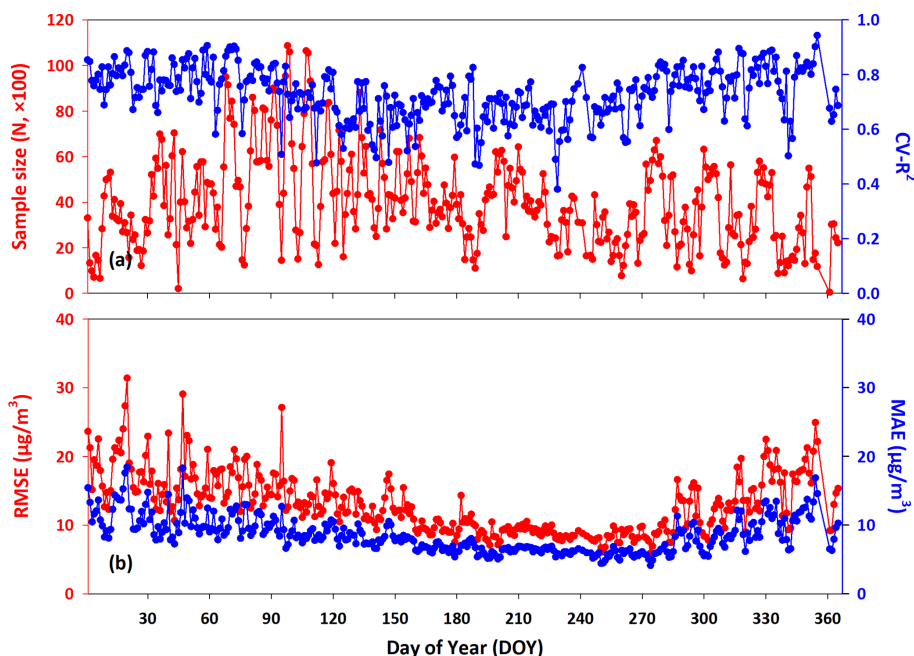


Figure 10. Time series of out-of-sample cross validation of hourly PM_{2.5} estimates ($\mu\text{g m}^{-3}$) in terms of (a) the sample size (N , red) and CV-R^2 (blue) and (b) RMSE (red) and MAE (blue) in 2018 in China.

eral, hourly PM_{2.5} estimates are more reliable on approximately 79 % ($\text{CV-R}^2 > 0.7$), 70 % ($\text{RMSE} < 15 \mu\text{g m}^{-3}$), and 74 % ($\text{MAE} < 10 \mu\text{g m}^{-3}$) of the days in the year. The model performance also varies greatly at the seasonal level, with average CV-R^2 values of 0.82, 0.71, 0.87, and 0.86 and average RMSE values of 14.55, 9.63, 11.83, and $17.57 \mu\text{g m}^{-3}$ in spring, summer, autumn, and winter, respectively (Fig. 11).

In general, the overall uncertainty of PM_{2.5} estimates increases at the beginning and at the end of the year likely due to the harsher environmental conditions (e.g., low humidity and less precipitation) and more intense human activities (e.g., coal heating and straw burning) in winter and spring.

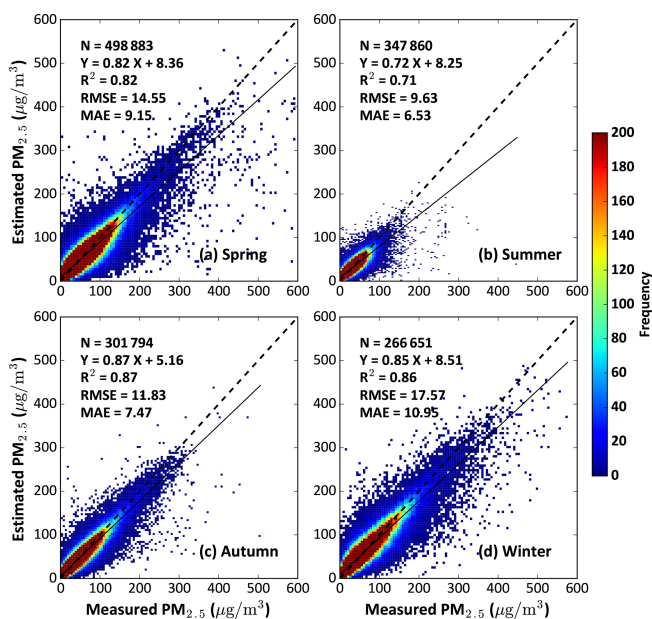


Figure 11. Density scatterplots of out-of-sample cross-validation results of hourly PM_{2.5} estimates ($\mu\text{g m}^{-3}$) for (a) spring, (b) summer, (c) autumn, and (d) winter of 2018 in China. Dashed and solid lines denote 1 : 1 and best-fit lines from linear regression, respectively.

We have evaluated temporally synthesized PM_{2.5} data from the hourly data samples at each monitoring station for the year 2018 (Fig. 12). Daily mean PM_{2.5} estimates are highly correlated to those calculated from surface observations ($R^2 = 0.91$), and the average RMSE (MAE) value is 10.11 (6.39) $\mu\text{g m}^{-3}$. This suggests that the STLGM model can capture daily PM_{2.5} variations more accurately. Note that daily synthetic PM_{2.5} data derived from geostationary satellites have a higher temporal frequency than data derived from sun-synchronous satellites. In general, PM_{2.5} synthetic values also have high accuracies and low estimation uncertainties (e.g., $R^2 = 0.98$, RMSE = 1.6–3.3 $\mu\text{g m}^{-3}$, MAE = 1.1–2.3 $\mu\text{g m}^{-3}$) from monthly to annual scales, allowing for a better description of spatiotemporal distributions and variations in PM_{2.5} pollution across China.

3.2 Spatiotemporal characteristics

3.2.1 Diurnal variations

Figure 13 shows Himawari-8-derived hourly mean near-surface PM_{2.5} concentrations from 08:00 to 17:00 LT in 2018 across mainland China. They do not cover western Xinjiang and Tibet due to the limitation of satellite scanning. PM_{2.5} pollution varies diurnally across China, being at an overall low level at sunrise ($\sim 29.94 \pm 10.91 \mu\text{g m}^{-3}$). With the increase in human activities, air pollution becomes more severe over time, reaching a peak at around 10:00–11:00 LT in China ($\sim 36 \pm 13 \mu\text{g m}^{-3}$). These high levels of pollution

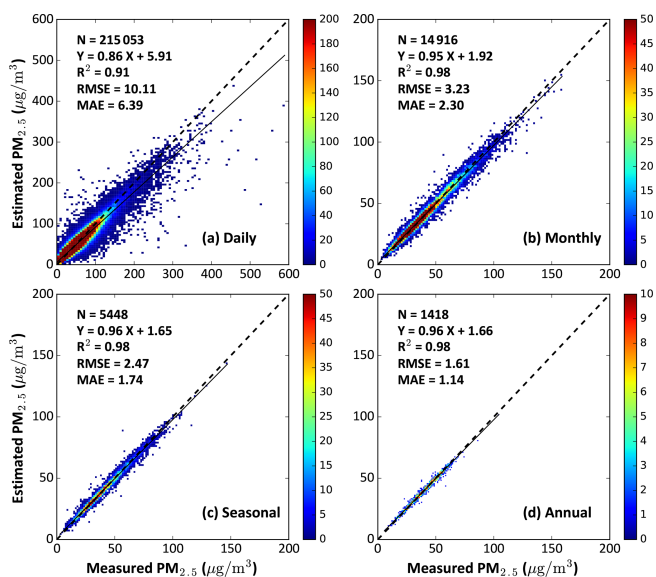


Figure 12. Density scatterplots of out-of-sample cross-validation results of (a) daily, (b) monthly, (c) seasonal, and (d) annual mean PM_{2.5} estimates ($\mu\text{g m}^{-3}$) in 2018 across China.

can last several hours. As the day progresses, human activities subside, and atmospheric fine particles settle on surfaces. PM_{2.5} concentrations thus decrease towards sunset in most areas in China ($\sim 23.21 \pm 9.73 \mu\text{g m}^{-3}$). In general, air pollution in the morning (i.e., 08:00–12:00 LT) is much more severe than in the afternoon (i.e., 13:00–17:00 LT) in China, with morning PM_{2.5} concentrations about 1.3 times higher than afternoon levels. This is related to the influence of varying BLHs (Z. Li et al., 2017; Su et al., 2018).

Table 2 summarizes the diurnal PM_{2.5} variations in eastern China and three typical urban agglomerations. PM_{2.5} pollution levels in eastern China are generally higher than the national level at each hour of the day due to the dense human population and intensive human activities. In the BTH region, PM_{2.5} pollution varies greatly, with hourly PM_{2.5} concentrations ranging from $28.88 \pm 10.16 \mu\text{g m}^{-3}$ (10:00 LT) to $49.31 \pm 15.03 \mu\text{g m}^{-3}$ (16:00 LT) and with differences exceeding $20 \mu\text{g m}^{-3}$. PM_{2.5} pollution remained at a high level ($> 42 \mu\text{g m}^{-3}$) before 12:00 LT and dropped to a lower level ($< 29 \mu\text{g m}^{-3}$) after 16:00 LT. This is closely related to people's daily activities and the production and life cycle of PM_{2.5} during the day, as well as the change in boundary mixing as a function of the day (Lennartson et al., 2018; Wang and Christopher, 2003). Similar patterns and PM_{2.5} pollution levels are seen in the YRD region. In general, the PRD region is less polluted in the morning but more severely polluted in the afternoon than the BTH region. Compared with the BTH and PRD regions, PM_{2.5} pollution in the PRD region is much lower and shows a smaller diurnal difference, with hourly PM_{2.5} values ranging from $29.49 \pm 5.97 \mu\text{g m}^{-3}$ (11:00 LT) to $36.36 \pm 5.76 \mu\text{g m}^{-3}$ (08:00 LT). Better natural

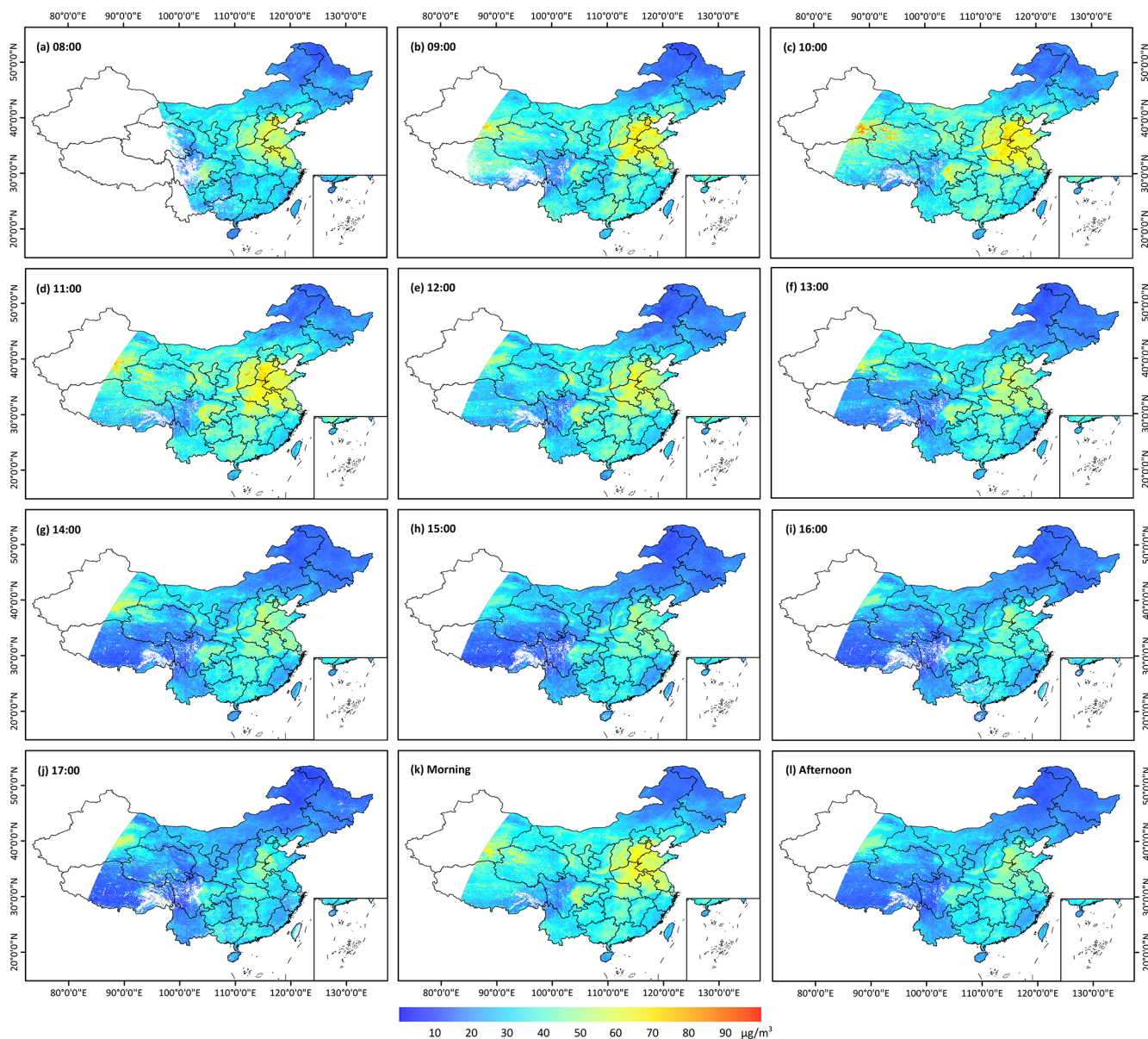


Figure 13. Himawari-8-derived hourly mean PM_{2.5} maps (5 km) for different times of the day: (a) 08:00 LT, (b) 09:00 LT, (c) 10:00 LT, (d) 11:00 LT, (e) 12:00 LT, (f) 13:00 LT, (g) 14:00 LT, (h) 15:00 LT, (i) 16:00 LT, (j) 17:00 LT, (k) morning (08:00–12:00 LT), and (l) afternoon (13:00–17:00 LT) in 2018 across China.

conditions and fewer pollutant emissions mainly explain this (Su et al., 2018).

In general, our satellite-derived diurnal variations in PM_{2.5} pollution agree well with ground-based observations at both national and regional levels but with generally lower PM_{2.5} concentrations (Fig. 9). The reason is that the PM_{2.5} monitoring stations are unevenly distributed and vary greatly in the number of stations at the regional scale. Also, most sites are distributed in urban areas, leading to inevitable overestimations due to urban–rural differences. However, satellite remote sensing can cope with this deficiency by generating spatially continuous PM_{2.5} maps, providing more accu-

rate information about the distribution of and variations in PM_{2.5} pollution.

3.2.2 Seasonal and annual variations

Seasonal PM_{2.5} maps are synthesized from daily PM_{2.5} maps from 2018 across China according to our previous approach (Wei et al., 2019a). Our results illustrate that PM_{2.5} pollution varies greatly on a seasonal scale (Fig. 14). Pollution levels are generally low and show similar spatial patterns in summer ($\sim 22.86 \pm 7.05 \mu\text{g m}^{-3}$) and autumn ($\sim 23.76 \pm 10.97 \mu\text{g m}^{-3}$) across China

Table 2. Hourly mean PM_{2.5} concentrations ($\mu\text{g m}^{-3}$) in 2018 in China, eastern China (ECHN), the Beijing–Tianjin–Hebei (BTH) region, the Yangtze River Delta (YRD), and the Pearl River Delta (PRD).

Time	China	ECHN	BTH	YRD	PRD
08:00	29.94 ± 10.91	31.97 ± 11.55	42.46 ± 12.97	38.60 ± 10.57	29.34 ± 5.01
09:00	33.37 ± 12.59	36.29 ± 13.52	47.32 ± 15.04	43.55 ± 11.27	34.81 ± 5.46
10:00	35.67 ± 13.53	38.56 ± 14.05	49.31 ± 15.03	44.72 ± 11.17	35.48 ± 5.47
11:00	35.63 ± 13.05	38.72 ± 13.53	49.10 ± 13.77	44.27 ± 10.55	36.36 ± 5.76
12:00	31.23 ± 11.74	35.10 ± 12.47	42.38 ± 12.86	41.37 ± 9.77	34.56 ± 5.72
13:00	28.45 ± 11.40	32.23 ± 11.73	37.70 ± 11.55	39.36 ± 9.22	33.33 ± 5.48
14:00	26.36 ± 11.18	30.14 ± 11.09	34.32 ± 11.81	37.31 ± 8.59	32.05 ± 5.50
15:00	24.25 ± 10.06	28.67 ± 10.21	31.95 ± 11.26	36.77 ± 8.13	30.34 ± 5.43
16:00	23.63 ± 9.26	27.38 ± 9.15	29.82 ± 10.13	32.84 ± 6.30	29.49 ± 5.97
17:00	23.21 ± 9.73	26.63 ± 8.93	28.88 ± 10.16	27.59 ± 4.39	31.56 ± 6.17
Morning	33.29 ± 11.59	36.15 ± 12.41	46.12 ± 13.29	42.50 ± 10.22	34.52 ± 4.63
Afternoon	25.11 ± 9.78	29.01 ± 9.70	32.53 ± 10.53	34.76 ± 6.66	31.42 ± 4.85

(Table 3). By contrast, it is much more severe in spring ($\sim 32.84 \pm 11.49 \mu\text{g m}^{-3}$) and winter ($\sim 39.04 \pm 16.32 \mu\text{g m}^{-3}$) across China, especially in the BTH and YRD regions in winter. The main reasons are the frequent sandstorms and the long-distance transmission of sand and dust in spring and the burning of coal and fossil fuels for heating in winter leading to more pollutant emissions in northern China.

PM_{2.5} pollution also shows significant spatial heterogeneities across China (Fig. 15), with an annual mean PM_{2.5} concentration of $28.99 \pm 10.31 \mu\text{g m}^{-3}$ in 2018 (Table 3). High pollution levels are always observed in the Hebei, Shandong, Jiangsu, Anhui, Henan, Hubei, and Sichuan provinces. Interactions between intensive human activities, adverse stagnant weather (e.g., low BLHs and low winds), and special terrain (e.g., basin) can increase anthropogenic aerosols (Chen et al., 2008; Wang et al., 2018). By contrast, PM_{2.5} pollution is relatively light in the northeast (e.g., Heilongjiang and Jilin provinces), the southwest (e.g., Tibet and Yunnan provinces), and the eastern coastal areas of China (e.g., Zhejiang and Fujian provinces). These provinces are sparsely populated or experience meteorological conditions favorable for dispersing pollution (Su et al., 2018).

3.3 Discussion

3.3.1 Comparison with traditional models

We first compared results from the STLGM model with results from five widely used statistical regression models employed for estimating PM_{2.5} in China using the same input dataset (Table 4). The multivariate linear regression (MLR) model performs the worst due to the complex nonlinear PM_{2.5}–AOD relationship. The GWR model performs better because it takes into account the spatial characteristics of PM_{2.5} pollution. The generalized additive model (GAM) and the LME model show overall improved performances with decreasing

estimation uncertainties because of their nonlinear characteristics and stronger data regression abilities. The two-stage model outperforms the GAM and maximum likelihood estimation (MLE) models with higher CV- R^2 values and smaller estimation uncertainties by combining the advantages of the GWR and LME models. Our model performs better than all of the traditional statistical regression models considered mainly due to its stronger data-mining ability.

The first six rows of Table 5 show the accuracies and efficiencies of six tree-based machine-learning models when estimating PM_{2.5} in China using the same input dataset. The decision tree (DT; Quinlan, 1986) is a traditional, frequently used, supervised learning classification method. Although the training speed is the fastest and the memory consumption is the least, it has the worst performance because of the simple single classifier. The model performances of ensemble-learning approaches, i.e., GBDT (Friedman, 2001), RF (Breiman, 2001), extremely randomized trees (ERTs; Geurts et al., 2006), and XGBoost (Chen and Guestrin, 2016), can be significantly improved by combining several weak classifiers into a strong classifier. Among them, the ERT model yields a higher estimation accuracy and a stronger spatial prediction ability than other ensemble-learning models. The LightGBM model (Ke et al., 2017) performs the best with the highest accuracy and smallest uncertainty among all tree-based machine-learning approaches considered.

The model efficiency differs among these models due to the large differences in the algorithm design frameworks. These tree-based machine-learning models can be divided into two categories. The DT, RF, and ERT models fall into the “bagging” category, which synthesizes multiple independent and unrelated weak classifiers into a strong classifier. It allows for work in parallel, which can save much time but may need more computer memory. The GBDT, XGBoost, and LightGBM models fall into the “boosting” category, which synthesizes multiple interdependent and related weak clas-

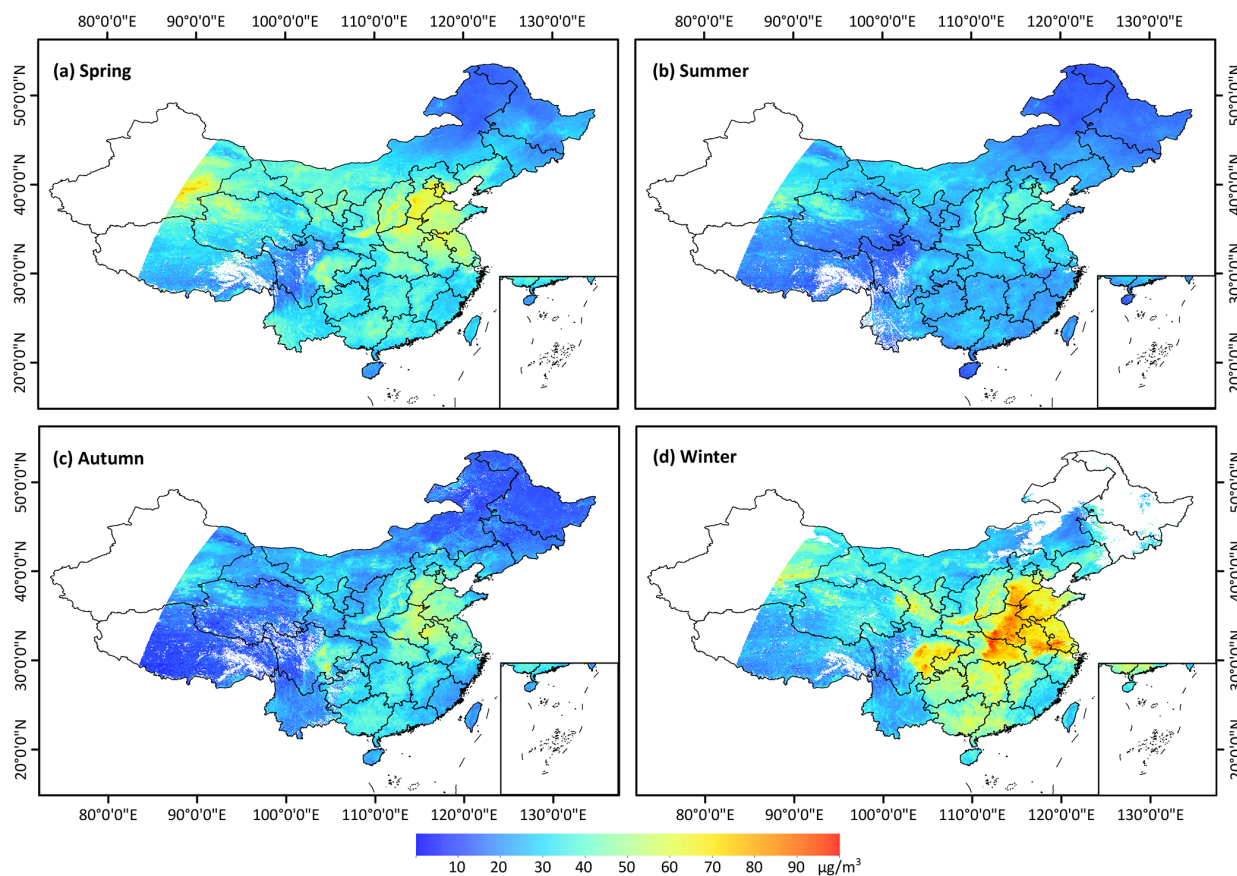


Figure 14. Himawari-8-derived seasonal mean PM_{2.5} maps (5 km) for (a) spring, (b) summer, (c) autumn, and (d) winter of 2018 across China.

Table 3. Annual and seasonal mean PM_{2.5} concentrations ($\mu\text{g m}^{-3}$) in 2018 in China, eastern China (ECHN), the Beijing–Tianjin–Hebei (BTH) region, the Yangtze River Delta (YRD), and the Pearl River Delta (PRD).

Time	China	ECHN	BTH	YRD	PRD
Spring	32.84 ± 11.49	34.93 ± 10.95	45.75 ± 12.96	40.35 ± 9.55	33.97 ± 4.50
Summer	22.86 ± 7.05	24.16 ± 6.29	29.99 ± 7.46	26.16 ± 4.58	23.56 ± 3.18
Autumn	23.76 ± 10.97	28.64 ± 11.60	35.98 ± 11.20	35.97 ± 7.80	29.54 ± 4.43
Winter	39.04 ± 16.32	48.34 ± 17.47	48.36 ± 18.92	57.41 ± 16.88	43.92 ± 8.56
Annual	28.99 ± 10.31	32.56 ± 10.78	39.32 ± 11.74	38.64 ± 8.27	32.98 ± 4.53

sifiers into a strong classifier. They can only work in serial, which may take much time but not too much memory. In general, the STGB model is the most time-consuming, while the STET model is the most memory-consuming. By contrast, the LightGBM model runs very fast and consumes very little computer memory, benefiting from a series of algorithm optimizations (Ke et al., 2017).

After considering spatiotemporal variations, all the newly defined space-time DT, GBDT, XGBoost, RF, ERT, and LightGBM models (i.e., STDT, STGB, STXB, STRF, STET, and STLG) show significant improvements in both overall estimation accuracy and spatial prediction ability in estimat-

ing hourly PM_{2.5} concentrations with reference to their original models. This further illustrates the importance of including spatiotemporal information when constructing PM_{2.5}–AOD relationships. More importantly, the training speed of these models did not decrease much, and the memory consumption did not increase much either. In general, the STLG model shows the best performance with a high efficiency (i.e., training speed = 46 s, memory usage = 0.60 GB) among all the space-time tree-based machine-learning models. Therefore, our new STLG model is highly valuable for accurate and fast air pollution monitoring, in particular for our future study extended to the global scale.

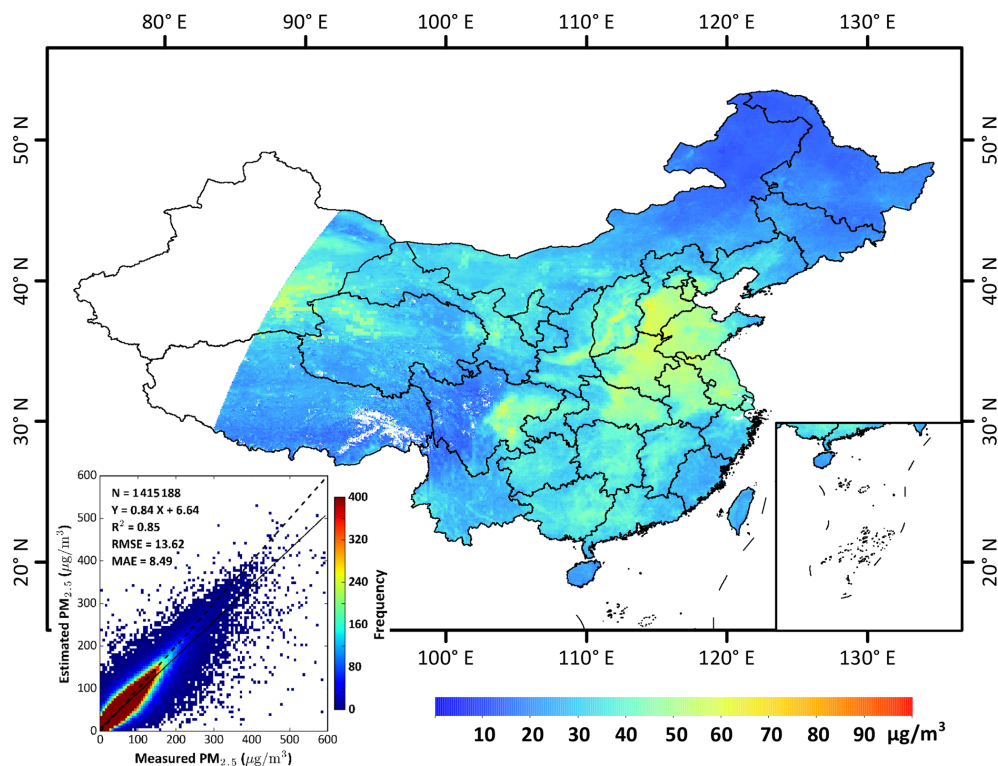


Figure 15. Himawari-8-derived annual mean PM_{2.5} map (5 km) for the year 2018 across China. The lower-left-inserted density scatterplot represents out-of-sample cross-validation results for all hourly PM_{2.5} estimates in China.

Table 4. Comparison of the model performances of widely used models and the STLG model in estimating PM_{2.5} from Himawari-8 data at 14:00 LT in 2018 in China ($N = 162\,840$).

Model	Out-of-sample validation			Out-of-station validation		
	CV- R^2	RMSE	MAE	CV- R^2	RMSE	MAE
MLR	0.19	24.17	22.89	0.19	24.19	22.91
GWR	0.39	21.96	20.74	0.37	22.42	21.02
GAM	0.39	19.09	18.64	0.36	19.77	18.89
LME	0.50	18.91	17.34	0.48	19.06	17.95
Two-stage	0.58	17.60	15.71	0.54	17.99	16.01
STLG	0.85	13.09	8.11	0.81	14.63	9.29

3.3.2 Comparison with related studies

We compared Himawari-8-based hourly PM_{2.5} estimates at regional and national scales in China with previous related studies (Table 6). Local hourly PM_{2.5} concentrations retrieved from our national-scale model are more accurate than those derived from the models developed separately in local areas, e.g., the LME model (Wang et al., 2017), the GWR, SVR, RF, and DNN models in the BTH region (Sun et al., 2019) and the two-stage RF and DNN models in the YRD region (Fan et al., 2020; Tang et al., 2019). Our model also outperforms most of the statistical regression models and machine-learning models focused on the entirety of China,

e.g., the I-LME, IGTWR, RF, AdaBoost, XGBoost, and their stacked models in China (Chen et al., 2019; Liu et al., 2019; Xue et al., 2020; T. Zhang et al., 2019). This is due to the stronger data-mining ability, considering key spatial and temporal information about air pollution (ignored in previous studies), which introduces more comprehensive factors that affect PM_{2.5} pollution (e.g., emission inventories).

4 Summary and conclusion

PM_{2.5} has a great impact on the atmospheric environment and is also used as a key indicator in environmental health studies. It varies diurnally, affected by both natural and human factors. Previous studies have been based on data from sun-synchronous satellites which can monitor air pollution at coarse temporal scales (i.e., daily), while high-temporal-resolution and accurate information on PM_{2.5} is needed. In this study, the Himawari-8/AHI hourly AOD product is employed to address this issue. Moreover, considering the large volume of input data and the large errors in PM_{2.5} estimation using traditional methods, an efficient and accurate space-time Light Gradient Boosting Machine (i.e., STLG) model has been developed. It utilizes meteorological, human, land use, and topographical parameters and is implemented at 5 km resolution and hourly timescale to generate PM_{2.5} information over China. The hourly PM_{2.5} estimates are evalu-

Table 5. Comparison of the model performances of different tree-based machine-learning models and the STLG model using the same input data. Data are from 14:00 LT in 2018 in China ($N = 162\,840$). TSpeed and TMemory refer to the speed and memory consumption during the model training.

Model	Out-of-sample validation			Out-of-station validation			TSpeed (s)	TMemory (GB)
	R^2	RMSE	MAE	R^2	RMSE	MAE		
DT	0.52	25.53	14.80	0.48	27.03	15.57	6	0.58
GBDT	0.65	20.03	13.17	0.61	21.20	14.10	94	0.59
XGBoost	0.73	17.94	10.78	0.68	19.59	11.93	456	0.69
RF	0.72	17.86	11.33	0.69	18.80	11.95	165	2.59
ERT	0.74	17.12	10.87	0.72	18.01	11.49	54	3.69
LightGBM	0.78	15.79	9.84	0.73	17.59	11.21	34	0.60
STDT	0.65	21.09	12.33	0.63	22.00	12.85	8	0.60
STGB	0.75	16.82	10.93	0.73	17.61	11.54	503	0.61
STXB	0.82	14.73	8.76	0.78	15.92	9.62	456	0.68
STRF	0.81	14.62	9.17	0.79	15.44	9.69	219	2.75
STET	0.82	14.42	8.95	0.80	15.30	9.55	77	4.25
STLG	0.85	13.09	8.11	0.81	14.63	9.29	46	0.60

Table 6. Comparison of model performances from previous studies in estimating hourly PM_{2.5} concentrations in China.

Model	Model validation			Region	Reference
	R^2	RMSE	MAE		
LME	0.86	24.5	14.2	BTH	Wang et al. (2017)
LME	0.63	29.0	18.1	BTH	Sun et al. (2019)
GWR	0.76	23.3	16.7		Sun et al. (2019)
SVR	0.77	21.5	12.3		Sun et al. (2019)
RF	0.82	20.3	12.1		Sun et al. (2019)
DNN	0.84	19.9	11.9		Sun et al. (2019)
two-stage RF	0.86	12.4	–	YRD	Tang et al. (2019)
DNN	0.86	14.3	–	YRD	Fan et al. (2020)
RF	0.82	19.6	12.2	China	Chen et al. (2019)
AdaBoost	0.84	18.3	10.7		Chen et al. (2019)
XGBoost	0.84	18.1	11.4		Chen et al. (2019)
Stacked model	0.85	17.3	10.5		Chen et al. (2019)
RF	0.86	17.3	10.3	China	Liu et al. (2019)
I-LME	0.84	–	–	BTH	T. Zhang et al. (2019)
	0.80	–	–	YRD	
	0.74	–	–	PRD	
	0.82	–	–	China	
IGTWR	0.78	21.1	–	China	Xue et al. (2020)

ated against surface observations, and PM_{2.5} spatiotemporal variations are also investigated.

The STLG model predicts hourly PM_{2.5} values accurately, with high out-of-sample (out-of-station) CV- R^2 values of ~ 0.81 – 0.85 (~ 0.76 – 0.81) and low RMSE values of ~ 11.24 – 15.56 (~ 12.49 – 17.61) $\mu\text{g m}^{-3}$ throughout the day. The model can also produce daily (e.g., $R^2 = 0.91$, RMSE = $10.11 \mu\text{g m}^{-3}$), monthly, seasonal, and annual mean PM_{2.5} values (e.g., $R^2 = 0.98$, RMSE = 1.6 – $3.3 \mu\text{g m}^{-3}$). PM_{2.5} varies diurnally in most areas of mainland China, where PM_{2.5} concentrations reach a maximum at 10:00 LT and are generally low at sunrise and sunset on a given day.

PM_{2.5} also varies greatly on a seasonal basis, in which winter and summer experience the highest and lowest air pollution levels, respectively. Comparison results suggest that the proposed model is more accurate than traditional statistical regression models, other tree-based machine-learning models, and various models developed in previous studies. Overall, the STLG model is more efficient, having faster training speed and less memory consumption. These results illustrate that this algorithm can be useful for real-time monitoring of PM_{2.5} pollution in China.

Data availability. PM_{2.5} measurements are available at <http://www.cnemc.cn> (CNEMC, 2020), the Himawari-8 AOD product is available at <https://www.eorc.jaxa.jp/tree/> (JAXA Himawari Monitor, 2020), ERA5 reanalysis products are available at <https://cds.climate.copernicus.eu/> (CDS, 2020), the MODIS product is available at <https://search.earthdata.nasa.gov/> (NASA, 2020), and the LandScan™ product is available at <https://landscan.ornl.gov/> (ORNL, 2020). The ChinaHighPM_{2.5} dataset is available at <https://weijing-rs.github.io/product.html> (Wei, 2020).

Author contributions. JiW designed the research and wrote the initial draft of this manuscript. ZL, RTP, JuW, and LS reviewed and edited the paper. RL and WX helped to process the data. MC copy-edited the article. All authors made substantial contributions to this work.

Competing interests. The authors declare that they have no conflict of interest.

Special issue statement. This article is part of the special issue “Satellite and ground-based remote sensing of aerosol optical, physical, and chemical properties over China”. It is not associated with a conference.

Acknowledgements. We would like to thank Qiang Zhang at Tsinghua University for providing MEIC pollution emission data for China. Jun Wang’s participation is made possible via the in-kind support from the University of Iowa.

Financial support. This research has been supported by the National Natural Science Foundation of China (grant no. 42030606) and the National Key Research and Development Program of China (grant no. 2017YFC1501702).

Review statement. This paper was edited by Toshihiko Takemura and reviewed by two anonymous referees.

References

- An, Z., Huang, R. J., Zhang, R., Tie, X., Li, G., Cao, J., Zhou, W., Shi, Z., Han, Y., Gu, Z., and Ji, Y.: Severe haze in northern China: a synergy of anthropogenic emissions and atmospheric processes, *P. Natl. Acad. Sci. USA*, 116, 8657–8666, 2019.
- Baez-Villanueva, O., Zambrano-Bigiarini, M., Beck, H., McNamara, I., and Tinh, N.: RF-MEP: a novel random forest method for merging gridded precipitation products and ground-based measurements, *Remote Sens. Environ.*, 239, 111606, <https://doi.org/10.1016/j.rse.2019.111606>, 2020.
- Behrens, T., Schmidt, K., Viscarra, R., Gries, P., Scholten, T., and Macmillan, R.: Spatial modelling with Euclidean distance fields and machine learning, *Eur. J. Soil Sci.*, 69, 757–770, 2018.

- Bessho, K., Date, K., Hayashi, M., Ikeda, A., and Yoshida, R.: An introduction to Himawari-8/9 – Japan’s new-generation geostationary meteorological satellites, *J. Meteorol. Soc. Jpn.*, 2016, 94, 151–183, 2016.
- Breiman, L.: Random forests, *Mach. Learn.*, 45, 5–32, 2001.
- CDS: ERA5, available at: <https://cds.climate.copernicus.eu/>, last access: 1 December 2020.
- Chan, C. and Yao, X.: Air pollution in megacities in China, *Atmos. Environ.*, 42, 1–42, 2008.
- Chen, J., Yin, J., Zang, L., Zhang, T., and Zhao, M.: Stacking machine learning model for estimating hourly PM_{2.5} in China based on Himawari-8 aerosol optical depth data, *Sci. Total Environ.*, 697, 134021, <https://doi.org/10.1016/j.scitotenv.2019.134021>, 2019.
- Chen, T. and Guestrin, C.: XGBoost: a scalable tree boosting system, in: *Proceedings of the 22nd ACM SIGKDD International Conference on Knowledge Discovery and Data Mining*, 13–17 August 2016, San Francisco, CA, USA, 785–794, 2016.
- Chen, Z., Cheng, S., Li, J., Guo, X., Wang, W., and Chen, D.: Relationship between atmospheric pollution processes and synoptic pressure patterns in northern China, *Atmos. Environ.*, 42, 6078–6087, 2008.
- CNEMC: <http://www.cnemc.cn>, last access: 1 December 2020.
- Delfino, R. J., Sioutas, C., and Malik, S.: Potential role of ultrafine particles in associations between airborne particle mass and cardiovascular health, *Environ. Health Persp.*, 113, 934–946, 2005.
- Dobson, J., Bright, E., Coleman, P., Durfee, R., and Worley, B.: A global population database for estimating populations at risk, *Photogramm. Eng. Rem. S.*, 66, 849–857, 2000.
- Fan, W., Qin, K., Cui, Y., Li, D., and Bilal, M.: Estimation of hourly ground-level PM_{2.5} concentration based on Himawari-8 apparent reflectance, *IEEE T. Geosci. Remote*, 59, 76–85, <https://doi.org/10.1109/TGRS.2020.2990791>, 2020.
- Friedman, J.: Greedy function approximation: a gradient boosting machine, *Ann. Stat.*, 29, 1189–1232, 2001.
- Geurts, P., Ernst, D., and Wehenkel, L.: Extremely randomized trees, *Mach. Learn.*, 63, 3–42, 2006.
- Giles, D. M., Sinyuk, A., Sorokin, M. G., Schafer, J. S., Smirnov, A., Slutsker, I., Eck, T. F., Holben, B. N., Lewis, J. R., Campbell, J. R., Welton, E. J., Korkin, S. V., and Lyapustin, A. I.: Advancements in the Aerosol Robotic Network (AERONET) Version 3 database – automated near-real-time quality control algorithm with improved cloud screening for Sun photometer aerosol optical depth (AOD) measurements, *Atmos. Meas. Tech.*, 12, 169–209, <https://doi.org/10.5194/amt-12-169-2019>, 2019.
- Gui, K., Che, H., Zeng, Z., Wang, Y., Zhai, S., Wang, Z., Luo, M., Zhang, L., Liao, T., Zhao, H., Li, L., Zheng, Y., and Zhang, X.: Construction of a virtual PM_{2.5} observation network in China based on high-density surface meteorological observations using the Extreme Gradient Boosting model, *Environ. Int.*, 141, 105801, <https://doi.org/10.1016/j.envint.2020.105801>, 2020.
- Huang, R., Zhang, Y., Bozzetti, C., Ho, K., Cao, J., Han, Y., Daelenbach, K., Slowik, J., Platt, S., Canonaco, F., Zotter, P., Wolf, R., Pieber, S., Bruns, E., Crippa, M., Ciarelli, G., Piazzalunga, A., Schwikowski, M., Abbaszade, G., Schnelle-Kreis, J., Zimmermann, R., An, Z., Szidat, S., Baltensperger, U., Haddad, I., and Prevot, A.: High secondary aerosol contribution to particulate pollution during haze events in China, *Nature*, 514, 218–222, 2014.

- Jacob, D. and Winner, D.: Effect of climate change on air quality, *Atmos. Environ.*, 43, 51–63, 2009.
- JAXA Himawari Monitor: <https://www.eorc.jaxa.jp/ptree/>, last access: 1 December 2020.
- Kampa, M. and Castanas, E.: Human health effects of air pollution, *Environ. Pollut.*, 151, 362–367, 2008.
- Ke, G., Meng, Q., Finley, T., Wang, T., Chen, W., Ma, W., Ye, Q., and Liu, T.: LightGBM: a highly efficient gradient boosting decision tree, in: *Advances in Neural Information Processing Systems*, ACM, Long Beach, CA, USA, 3149–3157, available at: <https://dl.acm.org/doi/10.5555/3294996.3295074> (last access: 1 January 2020), 2017.
- Kim, K., Kabir, E., and Kabir, S.: A review on the human health impact of airborne particulate matter, *Environ. Int.*, 74, 136–143, 2015.
- Lelieveld, J., Evans, J., Fnais, M., Giannadaki, D., and Pozzer, A.: The contribution of outdoor air pollution sources to premature mortality on a global scale, *Nature*, 525, 367–371, 2015.
- Lennartson, E. M., Wang, J., Gu, J., Castro Garcia, L., Ge, C., Gao, M., Choi, M., Saide, P. E., Carmichael, G. R., Kim, J., and Janz, S. J.: Diurnal variation of aerosol optical depth and PM_{2.5} in South Korea: a synthesis from AERONET, satellite (GOCI), KORUS-AQ observation, and the WRF-Chem model, *Atmos. Chem. Phys.*, 18, 15125–15144, <https://doi.org/10.5194/acp-18-15125-2018>, 2018.
- Letu, H., Yang, K., Nakajima, T., Ishimoto, H., Nagao, T., Riedi, J., Baran, A., Ma, R., Wang, T., Shang, H., Khatri, P., Chen, L., Shi, C., and Shi, J.: High-resolution retrieval of cloud microphysical properties and surface solar radiation using Himawari-8/AHI next-generation geostationary satellite, *Remote Sens. Environ.*, 239, 111583, <https://doi.org/10.1016/j.rse.2019.111583>, 2020.
- Li, M., Liu, H., Geng, G., Hong, C., Liu, F., Song, Y., Tong, D., Zheng, B., Cui, H., Man, H., Zhang, Q., and He, K.: Anthropogenic emission inventories in China: a review, *Natl. Sci. Rev.*, 4, 834–866, <https://doi.org/10.1093/nsr/nwx150>, 2017.
- Li, Z., Guo, J., Ding, A., Liao, H., Liu, J., Sun, Y., Wang, T., Xue, H., Zhang, H., and Zhu, B.: Aerosols and boundary-layer interactions and impact on air quality, *Natl. Sci. Rev.*, 4, 810–833, 2017.
- Li, Z., Xu, H., Li, K., Li, D., Xie, Y., Li, L., Zhang, Y., Gu, X., Zhao, W., Tian, Q., Deng, R., Su, X., Huang, B., Qiao, Y., Cui, W., Hu, Y., Gong, C., Wang, Y., Wang, X., Wang, J., Du, W., Pan, Z., Li, Z., and Bu, D.: Comprehensive study of optical, physical, chemical, and radiative properties of total columnar atmospheric aerosols over China: an overview of Sun–Sky Radiometer Observation Network (SONET) measurements, *B. Am. Meteorol. Soc.*, 99, 739–755, 2018.
- Li, Z., Guo, J., Ding, A., Liao, H., Liu, J., Sun, Y., Wang, T., Xue, H., Zhang, H., and Zhu, B.: East Asian Study of Tropospheric Aerosols and their Impact on Regional Clouds, Precipitation, and Climate (EAST-AIRCPC), *J. Geophys. Res.-Atmos.*, 124, 13026–13054, 2019.
- Liu, J., Weng, F., Li, Z., and Cribb, M.: Hourly PM_{2.5} estimates from a geostationary satellite based on an ensemble learning algorithm and their spatiotemporal patterns over central East China, *Remote Sens.-Basel*, 11, 2120, <https://doi.org/10.3390/rs11182120>, 2019.
- Liu, Y., Sarnat, J., Kilaru, V., Jacob, D., and Koutrakis, P.: Estimating ground-level PM_{2.5} in the eastern United States using satellite remote sensing, *Environ. Sci. Technol.*, 39, 3269–78, 2005.
- Liu, Y., Franklin, M., Kahn, R., and Koutrakis, P.: Using aerosol optical thickness to predict ground-level PM_{2.5} concentrations in the St. Louis area: a comparison between MISR and MODIS, *Remote Sens. Environ.*, 107, 33–44, 2007.
- Ma, Z., Hu, X., Huang, L., Bi, J., and Liu, Y.: Estimating ground-level PM_{2.5} in China using satellite remote sensing, *Environ. Sci. Technol.*, 48, 7436–7444, 2014.
- NASA: EARTHDATA, available at: <https://search.earthdata.nasa.gov/>, last access: 1 December 2020.
- ORNL: LandScan, available at: <https://landscan.ornl.gov/>, last access: 1 December 2020.
- Quinlan, J.: Induction on decision tree, *Mach. Learn.*, 1, 81–106, 1986.
- Ramanathan, V. and Feng, Y.: Air pollution, greenhouse gases and climate change: global and regional perspectives, *Atmos. Environ.*, 43, 37–50, 2009.
- Rodriguez, J. D., Perez, A., and Lozano, J. A.: Sensitivity analysis of k-fold cross-validation in prediction error estimation, *IEEE T. Pattern Anal.*, 32, 569–575, 2010.
- Shi, H.: Best-first decision tree learning, PhD thesis, The University of Waikato, Hamilton, New Zealand, 2007.
- Su, T., Li, Z., and Kahn, R.: Relationships between the planetary boundary layer height and surface pollutants derived from lidar observations over China: regional pattern and influencing factors, *Atmos. Chem. Phys.*, 18, 15921–15935, <https://doi.org/10.5194/acp-18-15921-2018>, 2018.
- Sun, Y., Zhuang, G., Wang, Y., Han, L., Guo, J., Dan, M., Zhang, W., Wang, Z., and Hao, Z.: The air-borne particulate pollution in Beijing – concentration, composition, distribution and sources, *Atmos. Environ.*, 38, 5991–6004, 2004.
- Sun, Y., Zeng, Q., Geng, B., Lin, X., Sude, B., and Chen, L.: Deep learning architecture for estimating hourly ground-level PM_{2.5} using satellite remote sensing, *IEEE Geosci. Remote S.*, 16, 1343–1347, 2019.
- Tang, D., Liu, D., Tang, Y., Seyler, B., Deng, X., and Zhan, Y.: Comparison of GOCI and Himawari-8 aerosol optical depth for deriving full coverage hourly PM_{2.5} across the Yangtze River Delta, *Atmos. Environ.*, 217, 116973, <https://doi.org/10.1016/j.atmosenv.2019.116973>, 2019.
- van Donkelaar, A., Martin, R., and Park, R.: Estimating ground-level PM_{2.5} using aerosol optical depth determined from satellite remote sensing, *J. Geophys. Res.-Atmos.*, 111, D21201, <https://doi.org/10.1029/2005JD006996>, 2006.
- Wang, J. and Christopher, S.: Intercomparison between satellite-derived aerosol optical thickness and PM_{2.5} mass: Implication for air quality studies, *Geophys. Res. Lett.*, 30, 2095, <https://doi.org/10.1029/2003GL018174>, 2003.
- Wang, W., Mao, F., Du, L., Pan, Z., Gong, W., and Fang, S.: Deriving hourly PM_{2.5} concentrations from Himawari-8 AODs over Beijing–Tianjin–Hebei in China, *Remote Sens.-Basel*, 9, 858, <https://doi.org/10.3390/rs9080858>, 2017.
- Wang, X., Dickinson, R., Su, L., Zhou, C., and Wang, K.: PM_{2.5} pollution in China and how it has been exacerbated by terrain and meteorological conditions, *B. Am. Meteorol. Soc.*, 99, 105–119, 2018.

- Wei, J.: ChinaHighAirPollutants (CHAP), available at: <https://weijing-rs.github.io/product.html>, last access: 1 December 2020.
- Wei, J., Huang, W., Li, Z., Xue, W., Peng, Y., Sun, L., and Cribb, M.: Estimating 1-km-resolution PM_{2.5} concentrations across China using the space-time random forest approach, *Remote Sens. Environ.*, 231, 111221, <https://doi.org/10.1016/j.rse.2019.111221>, 2019a.
- Wei, J., Li, Z., Guo, J., Sun, L., Huang, W., Xue, W., Fan, T., and Cribb, M.: Satellite-derived 1-km-resolution PM₁ concentrations from 2014 to 2018 across China, *Environ. Sci. Technol.*, 53, 13265–13274, 2019b.
- Wei, J., Li, Z., Sun, L., Peng, Y., Zhang, Z., Li, Z., Su, T., Feng, L., Cai, Z., and Wu, H.: Evaluation and uncertainty estimate of the next-generation geostationary meteorological Himawari-8/AHI aerosol products, *Sci. Total Environ.*, 692, 879–891, 2019c.
- Wei, J., Li, Z., Peng, Y., and Sun, L.: MODIS Collection 6.1 aerosol optical depth products over land and ocean: validation and comparison, *Atmos. Environ.*, 201, 428–440, 2019d.
- Wei, J., Li, Z., Cribb, M., Huang, W., Xue, W., Sun, L., Guo, J., Peng, Y., Li, J., Lyapustin, A., Liu, L., Wu, H., and Song, Y.: Improved 1 km resolution PM_{2.5} estimates across China using enhanced space–time extremely randomized trees, *Atmos. Chem. Phys.*, 20, 3273–3289, <https://doi.org/10.5194/acp-20-3273-2020>, 2020.
- Wei, J., Li, Z., Lyapustin, A., Sun, L., Peng, Y., Xue, W., Su, T., and Cribb, M.: Reconstructing 1-km-resolution high-quality PM_{2.5} data records from 2000 to 2018 in China: spatiotemporal variations and policy implications, *Remote Sens. Environ.*, 252, 112136, <https://doi.org/10.1016/j.rse.2020.112136>, 2021a.
- Wei, J., Li, Z., Xue, W., Sun, L., Fan, T., Liu, L., Su, T., and Cribb, M.: The ChinaHighPM₁₀ dataset: generation, validation, and spatiotemporal variations from 2015 to 2019 across China, *Environ. Int.*, 146, 106290, <https://doi.org/10.1016/j.envint.2020.106290>, 2021b.
- Wei, J., Li, Z., Sun, L., Xue, X., Ma, Z., Liu, L., Fan, T., and Cribb, M.: Extending the EOS long-term PM_{2.5} data records since 2013 in China: application to the VIIRS Deep Blue aerosol products, *IEEE T. Geosci. Remote.*, 59, 1–12, <https://doi.org/10.1109/TGRS.2021.3050999>, 2021c.
- Wu, J., Yao, F., Si, M., and Li, W.: VIIRS-based remote sensing estimation of ground-level PM_{2.5} concentrations in Beijing–Tianjin–Hebei: a spatiotemporal statistical model, *Remote Sens. Environ.*, 184, 316–328, 2016.
- Xue, Y., Li, Y., Guang, J., Tugui, A., She, L., Qin, K., Fan, C., Che, Y., Xie, Y., Wen, Y., and Wang, Z.: Hourly PM_{2.5} estimation over central and eastern China based on Himawari-8 data, *Remote Sens.-Basel*, 12, 855, <https://doi.org/10.3390/rs12050855>, 2020.
- Yao, F., Wu, J., Li, W., and Peng, J.: A spatially structured adaptive two-stage model for retrieving ground-level PM_{2.5} concentrations from VIIRS AOD in China, *ISPRS J. Photogramm.*, 151, 263–276, 2019.
- Yoshida, M., Kikuchi, M., Nagao, T., Murakami, H., Nomaki, T., and Higurashi, A.: Common retrieval of aerosol properties for imaging satellite sensors, *J. Phys. Soc. Jpn.*, 96b, 193–209, 2018.
- Zhang, Q., Zheng, Y., Tong, D., Shao, M., and Hao, J.: Drivers of improved PM_{2.5} air quality in china from 2013 to 2017. *P. Natl. Acad. Sci. USA*, 116, 24463–24469, 2019.
- Zhang, T., Zang, L., Wan, Y., Wang, W., and Zhang, Y.: Ground-level PM_{2.5} estimation over urban agglomerations in China with high spatiotemporal resolution based on Himawari-8. *Sci. Total Environ.*, 676, 535–544, 2019.
- Zhang, T., He, W., Zheng, H., Cui, Y., Song, H., and Fu, S.: Satellite-based ground PM_{2.5} estimation using a gradient boosting decision tree, *Chemosphere*, 268, 128801, <https://doi.org/10.1016/j.chemosphere.2020.128801>, 2020.
- Zheng, B., Tong, D., Li, M., Liu, F., Hong, C., Geng, G., Li, H., Li, X., Peng, L., Qi, J., Yan, L., Zhang, Y., Zhao, H., Zheng, Y., He, K., and Zhang, Q.: Trends in China’s anthropogenic emissions since 2010 as the consequence of clean air actions, *Atmos. Chem. Phys.*, 18, 14095–14111, <https://doi.org/10.5194/acp-18-14095-2018>, 2018.